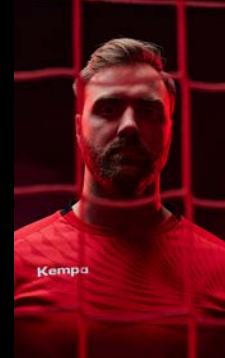




2023



Kempa



TEAMWEAR



Content

4 SPONSORSHIPS

6 SHIRT OVERVIEW



8 WAVE 26

NEW



20 PLAYER



40 PRIME



54 EMOTION 2.0



74 CORE 26

NEW



84 STATUS



96 BACK2COLOUR

NEW

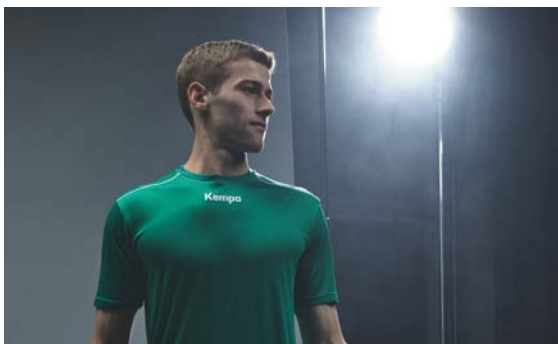


104 BLACK & WHITE

NEW



112 BASICS



136 PANTS

152 SOCKS



156 BASELAYER & PROTECTIONS



168 BAGS

NEW

refine now!



176 ACCESSORIES



179 GIVEAWAYS



180 TRAINING EQUIPMENT



182 *Creator*

Your own Design



186 INDEX



SHOES & HANDBALLS

PLEASE TURN THE CATALOGUE

Men's national team Iceland



HBW Balingen-Weilstetten



Buxtehuder SV



GC Amicitia Zürich Men



Women's national team Iceland



HC Elbflorenz Dresden



Flames Bensheim



GC Amicitia Zürich Women



Men's national team Czech Republic



ThSV Eisenach



VfL TIGERS Waiblingen



Metz Handball



Women's national team Czech Republic



VfL Oldenburg



FRISCH AUF! Frauen



Alpla HC Hard



FRISCH AUF! Göppingen



TuS Ferndorf Handball



Pfadi Winterthur



Handball Westwien



TSV St. Otmar St. Gallen



HC LINZ AG



VfL Potsdam



Eintracht Hildesheim



HC Midtjylland



Apolloon Kortrijk Spurs



MSPR Siódemka Miedz Huras Legnica



HBC Celles sur Belle



Alingsås HK



Helvetia Anaitasuna



HB Sint-Truiden



PRE ZERO APR Radom



IF Hallby HK Men



Skive FH



Union Beynoise HB Men



Unimetal Recycling MTS Chrzanów



PAUC Handball



IF Hallby HK Women



Balano Cangas



Union Beynoise HB Women



Varsovia Warszawa



Cesson Rennes Métropole Handball



Västerås HK HF



Hubo Handbal Men



Sandra Spa Pogon Szczecin



Exact Systems Norwid Czestochowa



Istres Handball



Handball Club Saint Amand Les Eaux



Hubo Handbal Women



MTS Zory



MKS Handball Czersk



SHIRT OVERVIEW



NEW **INCLUSIVE 2026**

WAVE 26 from Page 8

Art. 2003654
Art. 2003655 WOMEN



INCLUSIVE 2025

PLAYER from Page 20

Art. 2003620
Art. 2003621 WOMEN



INCLUSIVE 2024

PRIME from Page 40

Art. 2003121
Art. 2003122 WOMEN



INCLUSIVE 2023

EMOTION 2.0 from Page 54

Art. 2003163
Art. 2003164 WOMEN



SUSTAINABILITY IS NOT JUST A MATTER OF CHOICE

FOR THE PLANET



We push for progress. And for us, that also means taking responsibility ourselves: **For our fellow human beings, our environment, our products and their manufacturing processes.**

We always want to attach great importance to fair dealings with our employees, suppliers, customers and all those involved in the production and supply chain. We conscientiously accept the challenge of protecting the environment and set out on the path to change. We want to reduce our environmental footprint further and further and produce more and more sustainably.

THIS IS OUR CONTRIBUTION - FOR THE PLANET

uhlsport.group/en/responsibility





WAVE 26

INCLUSIVE 2026



WAVE 26 SHIRT

Art. 2003654

WAVE 26 SHORTS

Art. 2003656



WAVE 26 SHIRT WOMEN

Art. 2003655

WAVE 26 SHORTS WOMEN

Art. 2003657



WAVE 26 POLY JACKET

Art. 2003658

LITE TRAINING PANTS

Art. 2003626



WAVE 26 POLY JACKET WOMEN

Art. 2003659

LITE TRAINING PANTS WOMEN

Art. 2003628



WAVE 26 LONGSLEEVE

Art. 2003660





Jannik Kohlbacher



04

raglan cut

round neck in contrast colour

elastic Kempa and K-label prints

wave with triangle elements

cuffs with Kempa wording in contrast colour



back of the jersey is made of lightweight and breathable material

2face dry tech

cord in the waistband

without inner slip

2face dry tech

elastic Kempa prints

leg cuffs with Kempa wording



01



WAVE 26 SHIRT



Art. 2003654

Size 116, 128, 140, 152, 164
S, M, L, XL, XXL, 3XL

Material 100% polyester (recycled)

01 black/anthra, **02** white/grey, **03** kempablue/royal,
04 red/chili red, **05** dark grey melange/anthra,
06 hope green/lagoon, **08** royal/navy



WAVE 26 SHORTS



Art. 2003656

Size 116, 128, 140, 152, 164
S, M, L, XL, XXL, 3XL

Material 100% polyester (recycled)

01 black



INCLUSIVE 2026

ALTERNATIVE CLASSIC SHORTS ON PAGE 144



Xenia Smits

04

raglan cut

round neck in contrast colour

elastic Kempa and K-label prints

wave with triangle elements

cuffs with Kempa wording in contrast colour



back of the jersey is made of lightweight and breathable material

tailored for women

2face dry tech

cord in the waistband

2face dry tech

without inner slip

tailored for women

elastic Kempa prints

leg cuffs with Kempa wording



01



Back



Side



01



02



03



05



01

01

01

01

06



08



01

01

WAVE 26 SHIRT WOMEN



Art. 2003655

Size XS, S, M, L, XL, XXL

Material 100% polyester (recycled)

01 black/antra, **02** white/grey, **03** kempablue/royal,
04 red/chili red, **05** dark grey mélange/antra,
06 hope green/lagoon, **08** royal/navy



WAVE 26 SHORTS WOMEN

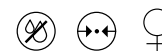


Art. 2003657

Size XS, S, M, L, XL, XXL

Material 100% polyester (recycled)

01 black



INCLUSIVE 2026 **ALTERNATIVE CLASSIC SHORTS ON PAGE 145**



Uwe Gensheimer

04



raglan cut

name label on the inside of the collar

elastic Kempa and K-label prints

wave with triangle elements

2face dry tech

zips in contrast colour

two pockets with zip

elastic rib at the waistband

sleeve cuffs with Kempa wording in contrast colour

01



cord in the waistband

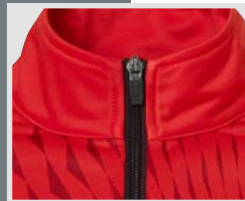
two pockets with zip

elastic Kempa print

2face dry tech

light training pants

zips at the back of the leg cuffs





WAVE 26 POLY JACKET



Art. 2003658

Size 116, 128, 140, 152, 164
S, M, L, XL, XXL, 3XL, 4XL

Material 100% polyester (recycled)

01 black/antra, **03** kempablu/royal,
04 red/chili red, **05** dark grey mélangé/antra,
06 hope green/lagoon, **08** royal/navy



INCLUSIVE 2026

JACKET AND PANTS AVAILABLE INDIVIDUALLY

LITE TRAINING PANTS

Art. 2003626

Size 116, 128, 140, 152, 164
S, M, L, XL, XXL, 3XL

01 & 09:
S, M, L, XL, XXL, 3XL, 4XL

Material 100% polyester, DryTech, ComfortFit

01 black/white, **09** navy/white



ALTERNATIVE PANTS ON PAGE 136



Franziska Peter

04



raglan cut

name label on the inside of the collar

elastic Kempa and K-label prints

wave with triangle elements

zips in contrast colour

tailored for women

2face dry tech

two pockets with zip

elastic rib at the waistband

sleeve cuffs with Kempa wording in contrast colour



cord on waistband

two pockets with zip

elastic Kempa print

2face dry tech

light training pants

tailored for women



zips at the back of the leg cuffs

01





**WAVE 26
POLY JACKET WOMEN**



Art. 2003659

Size XS, S, M, L, XL, XXL

Material 100% polyester (recycled)

01 black/antra, **03** kempablu/royal,
04 red/chili red, **05** dark grey mélange/antra,
06 hope green/lagoon, **08** royal/navy



**LITE TRAINING PANTS
WOMEN**

Art. 2003628

Size XS, S, M, L, XL, XXL

Material 100% polyester, DryTech, ComfortFit

01 black/white, **09** navy/white



INCLUSIVE 2026

JACKET AND PANTS AVAILABLE INDIVIDUALLY

ALTERNATIVE PANTS ON PAGE 136



Andreas Wolff

04



round neck in contrast colour

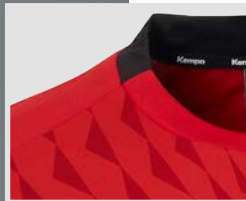
wave with triangle elements

elastic Kempa and K-label prints

2face dry tech

raglan sleeves

sleeve cuffs with Kempa wording in contrast colour



Back



Side



01



03



05



06



08



WAVE 26 LONGSLEEVE



Art. 2003660

Size S, M, L, XL, XXL, 3XL

Material 100% polyester (recycled)

01 black/antra, **03** kempablue/royal,
04 red/chili red, **05** dark grey mélange/antra,
06 hope green/lagoon, **08** royal/navy

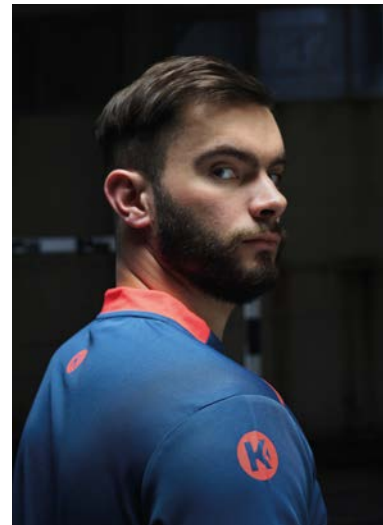


INCLUSIVE 2026



PLAYER

↻ INCLUSIVE 2025



PLAYER SHIRT

Art. 2003620

PLAYER SHORTS

Art. 2003622



PLAYER SHIRT WOMEN

Art. 2003621

PLAYER SHORTS WOMEN

Art. 2003623



PLAYER HOOD JACKET

Art. 2003624

LITE TRAINING PANTS

Art. 2003626



PLAYER HOOD JACKET WOMEN

Art. 2003627

LITE TRAINING PANTS WOMEN

Art. 2003628



PLAYER TRAINING TOP

Art. 2003629



PLAYER TANK TOP

Art. 2003645

PLAYER LONG SHORTS

Art. 2003647



PLAYER TANK TOP WOMEN

Art. 2003646

PLAYER LONG SHORTS WOMEN

Art. 2003648



REVERSIBLE TANK TOP

Art. 2003651

REVERSIBLE SHORTS

Art. 2003652



PLAYER SHOOTING SHIRT

Art. 2003644





Uwe Gensheimer

08



round neck with neck tape

piping in contrast colour

elastic Kempa- and K-label prints

back of the jersey is made of lightweight and breathable material

coloured inserts on the arm and neckline

2face dry tech



cords on waistband

without inside slip



2face dry tech



elastic Kempa- and K-label prints



coloured insert at the back of the leg hem

08



PLAYER SHIRT

Art. 2003620

Size 116, 128, 140, 152, 164
S, M, L, XL, XXL, 3XL

Material 100% polyester, DryTech, ComfortFit

01 black/white, **02** kempablue/white, **03** red/white, **04** royal/white, **05** white/black, **06** lime yellow/royal, **07** green/white, **08** ice grey/fluo red, **09** fluo red/ice grey, **10** dark grey mélange/white, **11** white/royal



PLAYER SHORTS

Art. 2003622

Size 116, 128, 140, 152, 164
S, M, L, XL, XXL, 3XL

Material 100% polyester, DryTech, ComfortFit

01 black, **08** ice grey/fluo red



200316005 royal
CLASSIC SHORTS

INCLUSIVE 2025

ALTERNATIVE CLASSIC SHORTS ON PAGE 144



Xenia Smits

piping in contrast colour

elastic Kempa- and K-label prints

tailored for women



elastic Kempa- and K-label prints

08

round neck with neck tape



coloured inserts on the arm and neckline

back of the jersey is made of lightweight and breathable material

2face dry tech

elastic waistband

without inside slip



2face dry tech

tailored for women

coloured insert at the back of the leg hem

08



200321005 royal
CLASSIC SHORTS WOMEN

PLAYER SHIRT WOMEN

Art. 2003621

Size XS, S, M, L, XL, XXL

Material 100% polyester, DryTech, ComfortFit

01 black/white, **02** kempablue/white, **03** red/white, **04** royal/white, **05** white/black, **06** lime yellow/royal, **07** green/white, **08** ice grey/fluo red, **09** fluo red/ice grey, **10** dark grey mélange/white, **11** white/royal



PLAYER SHORTS WOMEN

Art. 2003623

Size XS, S, M, L, XL, XXL

Material 100% polyester, DryTech, ComfortFit

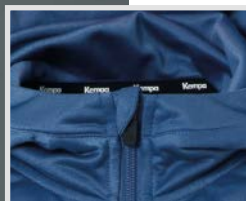
01 black, **08** ice grey/fluo red



INCLUSIVE 2024

ALTERNATIVE CLASSIC SHORTS ON PAGE 145

Luis Foege



08

coloured piping at the shoulder seam

elastic Kempa- and K-label prints



coloured insert at the hood

name label on the inside of the collar

2face dry tech

two pockets with zipper

two pockets with zipper

2face dry tech

zipper at the back of the leg cuffs

cord on waistband

elastic Kempa-print

light training pants

08



back



side



01



02



03



04



07



11

01

01

01

01

01

01

PLAYER HOOD JACKET

Art. 2003624

Size 116, 128, 140, 152, 164
S, M, L, XL, XXL, 3XL

Material 100% polyester, DryTech, ComfortFit

01 black/white, **02** kempablue/white, **03** red/white,
04 royal/white, **07** green/white, **08** ice grey/fluo red,
11 dark grey mélange/white



INCLUSIVE 2024

LITE TRAINING PANTS

Art. 2003626

Size 116, 128, 140, 152, 164
S, M, L, XL, XXL, 3XL
S, M, L, XL, XXL, 3XL, 4XL

Material 100% polyester, DryTech, ComfortFit

01 black/white, **08** ice grey/fluo red

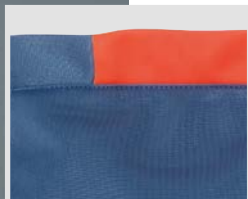


JACKET AND PANTS AVAILABLE INDIVIDUALLY

ALTERNATIVE PANTS ON PAGE 136



Adriana Marksteiner



08

coloured piping at the shoulder seam

Elastic Kempa and K Label prints

tailored for women

Two zipped pockets

2face dry tech

tailored for women

zipper at the back of the leg cuffs

coloured insert at the hood

name label on the inside of the collar

2face dry tech

zwei Reißverschlusstaschen

cord on waistband

elastic Kempa-print

light training pants

08

back



side



01



01

02



01

03



01

04



01

07



01

11



01

PLAYER HOOD JACKET WOMEN

Art. 2003627

Size XS, S, M, L, XL, XXL

Material 100% polyester, DryTech, ComfortFit

01 black/white, **02** kempablue/white, **03** red/white, **04** royal/white, **07** green/white, **08** ice grey/fluo red, **11** dark grey mélange/white



LITE TRAINING PANTS WOMEN

Art. 2003628

Size XS, S, M, L, XL, XXL

Material 100% polyester, DryTech, ComfortFit

01 black/white, **08** ice grey/fluo red



INCLUSIVE 2025

JACKET AND PANTS AVAILABLE INDIVIDUALLY

ALTERNATIVE PANTS ON PAGE 136

08

coloured piping at the shoulder seam

round neckline with coloured insert at the back of the collar

elastic Kempa- and K-label prints

name label on the inside of the collar

2face dry tech

elastic ribbed cuffs at the sleeves, collar and waistband



Jannik Kohlbacher



back



side



01



02



04



07



11



12



PLAYER TRAINING TOP

Art. 2003629

Size 116, 128, 140, 152, 164
S, M, L, XL, XXL, 3XL

Material 100% polyester, DryTech, FlexFit

01 black/white, **02** kempablue/white, **04** royal/white,
07 green/white, **08** ice grey/fluo red,
11 dark grey mélange/white, **12** fluo red/ice grey



INCLUSIVE 2025



Tim Nothdurft



03

piping in contrast colour

round neck with neck tape

elastic Kempa- and K-label prints



coloured inserts on the arm and neckline

ords on waistband

without inside slip

elastic Kempa- and K-label prints



coloured insert at the back of the leg hem

03



PLAYER TANK TOP

Art. 2003645

Size 116, 128, 140, 152, 164
S, M, L, XL, XXL, 3XL

Material 100% polyester, DryTech, ComfortFit

01 black/white, **03** red/white, **04** royal/white,
05 white/black



PLAYER LONG SHORTS

Art. 2003647

Size 116, 128, 140, 152, 164
S, M, L, XL, XXL, 3XL

Material 100% polyester, DryTech, ComfortFit

01 black/white, **03** red/white, **04** royal/white,
05 white/black



INCLUSIVE 2025

ALTERNATIVE CLASSIC SHORTS ON PAGE 144



04

piping in contrast colour

elastic Kempa- and K-label prints

tailored for women

CORDS ON WAISTBAND

WITHOUT INSIDE SLIP

ELASTIC KEMPA- AND K-LABEL PRINTS

ROUND NECK WITH NECK TAPE

COLOURED INSERTS ON THE ARM AND NECKLINE

TAILORED FOR WOMEN

COLOURED INSERT AT THE BACK OF THE LEG HEM

04



PLAYER TANK TOP WOMEN

Art. 2003646

Size XS, S, M, L, XL, XXL

Material 100% polyester, DryTech, ComfortFit

01 black/white, **03** red/white, **04** royal/white,
05 white/black



PLAYER LONG SHORTS WOMEN

Art. 2003648

Size XS, S, M, L, XL, XXL

Material 100% polyester, DryTech, ComfortFit

01 black/white, **03** red/white, **04** royal/white,
05 white/black



INCLUSIVE 2025

ALTERNATIVE PANTS ON PAGE 145



Tim Nothdurft



07

asymmetric collar

piping in contrast colour

elastic Kempa- and K-label prints

coloured inserts on the arm

REVERSIBLE JERSEY

reversible and light mesh tank top

CORDS ON WAISTBAND

reversible and light mesh material

without inside slip

coloured piping on the front of the shorts

elastic Kempa- and K-label prints

07





REVERSIBLE TANK TOP

Art. 2003651

Size 116, 128, 140, 152, 164
S, M, L, XL, XXL, 3XL

Material 100% polyester, ComfortFit

01 black/white, **03** red/white, **04** royal/white,
07 green/white



REVERSIBLE SHORTS

Art. 2003652

Size 116, 128, 140, 152, 164
S, M, L, XL, XXL, 3XL

Material 100% polyester, ComfortFit

01 black/white, **03** red/white, **04** royal/white,
07 green/white



INCLUSIVE 2025

ALTERNATIVE PANTS ON PAGE 144



Tim Nothdurft

01

coloured piping at the shoulder seam

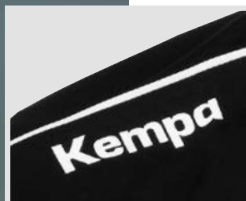
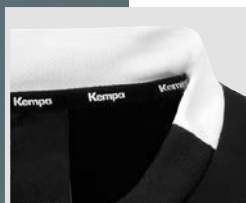
round neckline with coloured insert

elastic Kempa- and K-label prints



coloured inserts on the arm and neckline

wide-cut warm-up shirt



back



side



05



PLAYER SHOOTING SHIRT

Art. 2003644

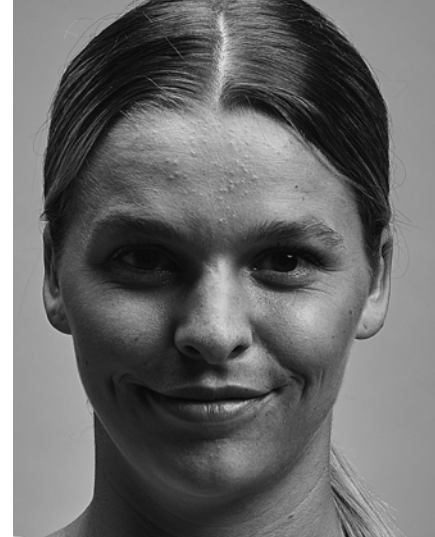
Size 116, 128, 140, 152, 164
S, M, L, XL, XXL, 3XL

Material 100% polyester, DryTech, ComfortFit

01 black/white, **05** white/black



INCLUSIVE 2025



 INCLUSIVE 2024

PRIME SHIRT

Art. 2003121

PRIME SHORTS

Art. 2003123



PRIME SHIRT WOMEN

Art. 2003122

PRIME SHORTS WOMEN

Art. 2003124



PRIME MULTI JACKET

Art. 2005136

EMOTION 2.0 PANTS

Art. 2003037



PRIME MULTI JACKET WOMEN

Art. 2005119

EMOTION 2.0 PANTS WOMEN

Art. 2003038



PRIME POLY JACKET

Art. 2002327



PRIME LONGSLEEVE

Art. 2002293





Krešimir Kozina

elastic Kempa- and K-label prints in 3D optics

contrast insert on side – suitable for sponsor prints



11

asymmetric round neck collar with slit opening



raglan sleeves

without inside slip

side seam moved to front

elastic Kempa- and K-label prints in 3D optics



cords on waistband

cut and sewn design on back

slit on leg opening

11

back



side



01



02



03



04



02

09

03

05

05



02

PRIME SHIRT

Art. 2003121

Size 128, 140, 152, 164
S, M, L, XL, XXL, 3XL

Material 100% polyester

01 black/antra, **02** kempablue/antra, **03** red/chili red,
04 royal/navy, **05** white/black, **11** deep red/deep blue



PRIME SHORTS

Art. 2003123

Size 128, 140, 152, 164
S, M, L, XL, XXL, 3XL

Material 100% polyester

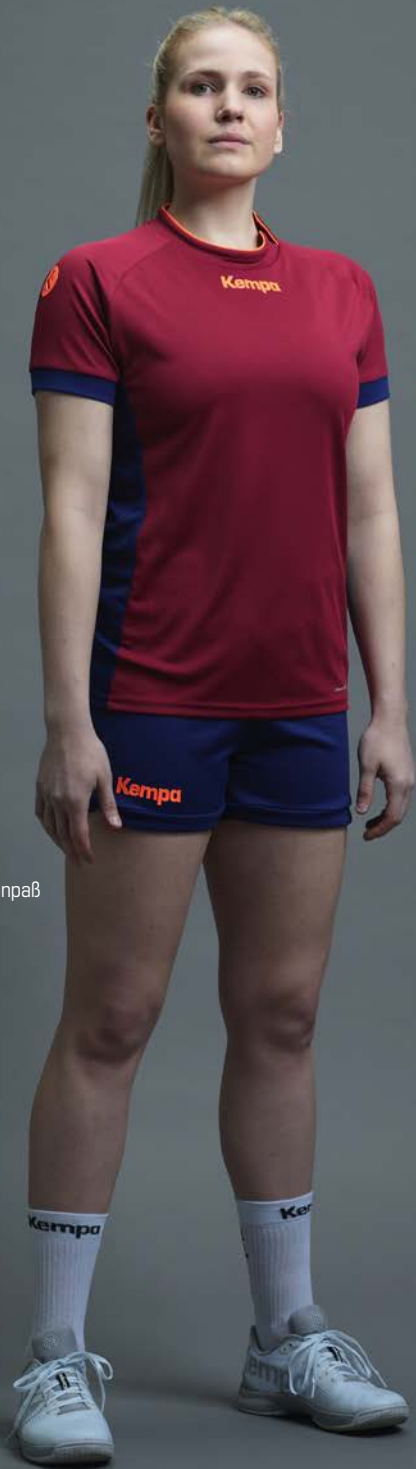
02 black, **03** red, **05** royal, **09** antra, **11** deep blue



INCLUSIVE 2024

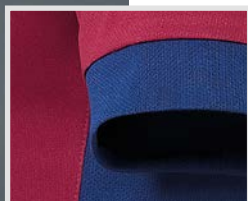
ALTERNATIVE CLASSIC SHORTS ON PAGE 144

Annika Ingenpaß



elastic Kempa- and K-label prints in 3D optics

contrast insert on side – suitable for sponsor prints



11



asymmetric round neck collar with slit opening

raglan sleeves

tailored for women

tailored for women

without inside slip

elastic Kempa- and K-label prints in 3D optics



cords on waistband

cut and sewn design on back

side seam moved to front

slit on leg opening

11

back



side



01



02



03



04



02

09

03

05

05



02

PRIME SHIRT WOMEN

Art. 2003122

Size XS, S, M, L, XL, XXL**Material** 100% polyester

01 black/anthra, **02** kempablue/anthra, **03** red/chili red,
04 royal/navy, **05** white/black, **11** deep red/deep blue



PRIME SHORTS WOMEN

Art. 2003124

Size XS, S, M, L, XL, XXL**Material** 100% polyester

02 black, **03** red, **05** royal, **09** anthra, **11** deep blue



INCLUSIVE 2024

ALTERNATIVE CLASSIC SHORTS ON PAGE 145



Luis Foegel

elastic Kempa- and K-label prints in 3D optics



11

hood with rib

cut and sewn design with raglan sleeves

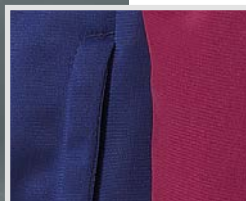
side pockets with zip

elastic rib on sleeve and hem opening

cord inside waistband

side pockets with zip

Kempa embroidery and K-label prints



zip on leg opening

11



PRIME MULTI JACKET

Art. 2005118

Size 128, 140, 152, 164
S, M, L, XL, XXL, 3XL

Material 100% polyester

01 black/antra, **02** anthra/kempablue, **03** chili red/red,
04 navy/royal, **11** deep blue/deep red



EMOTION 2.0 PANTS

Art. 2003037

Size 116, 128, 140, 152, 164
S, M, L, XL, XXL, 3XL, 4XL

Material 100% polyester

01 black, **02** navy, **04** anthra, **11** deep blue



INCLUSIVE 2024

JACKET AND PANTS AVAILABLE INDIVIDUALLY

ALTERNATIVE PANTS ON PAGE 136



Laetitia Quist



elastic Kempa- and K-label prints in 3D optics

tailored for women

elastic rib on sleeve and hem opening

side pockets with zip

tailored for women

zip on leg opening

11



hood with rib

cut and sewn design with raglan sleeves

side pockets with zip



cord inside waistband

Kempa embroidery and K-label prints

11



PRIME MULTI JACKET WOMEN

Art. 2005119

Size XS, S, M, L, XL, XXL

Material 100% polyester

01 black/antra, **02** anthra/kempablue, **03** chili red/red, **04** navy/royal, **11** deep blue/deep red



EMOTION 2.0 PANTS WOMEN

Art. 2003038

Size XS, S, M, L, XL, XXL

Material 100% polyester

01 black, **02** navy, **04** anthra, **11** deep blue



INCLUSIVE 2024

JACKET AND PANTS AVAILABLE INDIVIDUALLY

ALTERNATIVE PANTS ON PAGE 136



Uwe Gensheimer

11

elastic Kempa- and K-label prints

cut and sewn design with raglan sleeves



side pockets with zip

binding on sleeve and hem opening

side pockets with zip

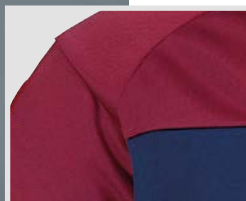
cord inside waistband



Kempa embroidery and K-label prints

zip on leg opening

11





PRIME POLY JACKET

Art. 2002327

Size 128, 140, 152, 164
S, M, L, XL, XXL, 3XL

Material 100% polyester

01 black/anthra, **02** anthra/kempablue, **03** chili red/red,
04 navy/royal, **11** deep blue/deep red



EMOTION 2.0 PANTS

Art. 2003037

Size 116, 128, 140, 152, 164
S, M, L, XL, XXL, 3XL, 4XL

Material 100% polyester

01 black, **02** navy, **04** anthra, **11** deep blue



INCLUSIVE 2024

JACKET AND PANTS AVAILABLE INDIVIDUALLY

ALTERNATIVE PANTS ON PAGE 136



Jannik Kohlbacher

elastic Kempa- and K-label prints
in 3D optics

11



asymmetric round neck collar
with slit opening

cut and sewn design
with raglan sleeves





PRIME LONGSLEEVE

Art. 2002293

Size 152, 164
S, M, L, XL, XXL, 3XL

Material 100% polyester

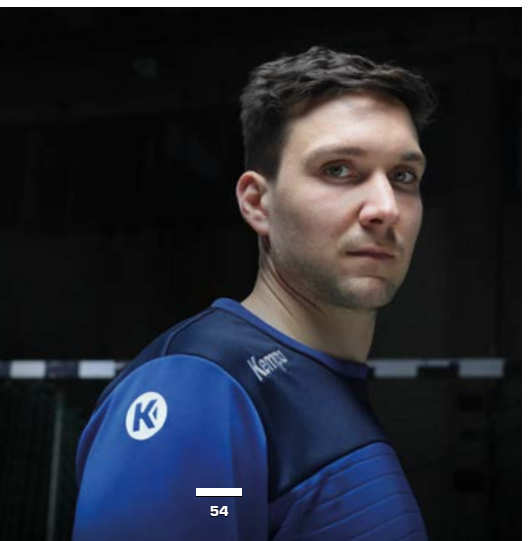
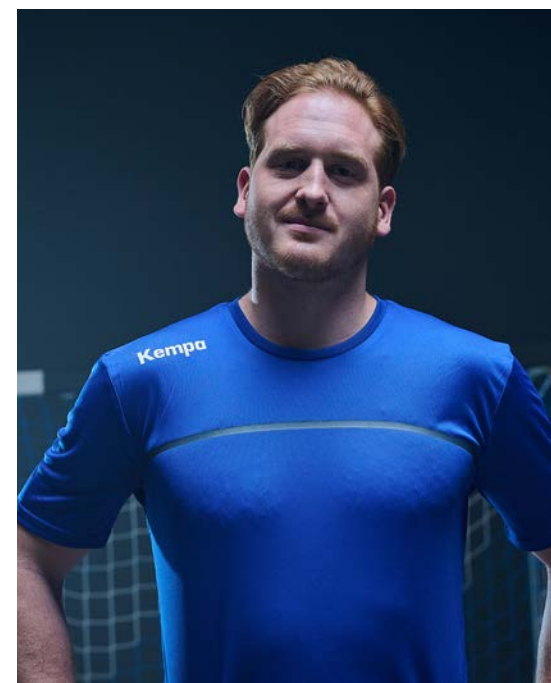
01 black/antra, **02** anthra/kempablue, **03** chili red/red,
04 navy/royal, **11** deep blue/deep red



INCLUSIVE 2024



EMOTION 2.0



↻ INCLUSIVE 2023



EMOTION 2.0 SHIRT

Art. 2003163

EMOTION 2.0 SHORTS

Art. 2003165



EMOTION 2.0 SHIRT WOMEN

Art. 2003164

EMOTION 2.0 SHORTS WOMEN

Art. 2003166



EMOTION 2.0 HOOD JACKET

Art. 2002256

EMOTION 2.0 PANTS

Art. 2003037



EMOTION 2.0 HOOD JACKET WOMEN

Art. 2002257

EMOTION 2.0 PANTS WOMEN

Art. 2003038



EMOTION 2.0 POLY JACKET

Art. 2002258



EMOTION 2.0 QUARTER ZIP HOODY

Art. 2002267



EMOTION 2.0 LONGSLEEVE

Art. 2002268



EMOTION 2.0 TRAINING TOP

Art. 2002149



EMOTION 2.0 POLY SHIRT

Art. 2003184





Björn Zintel



04

elastic Kempa- and K-label prints

round neck collar with neck tape

cut and sewn design on front and back



embossed lines on the front

without inside slip

CORDS ON WAISTBAND



elastic Kempa and K-label prints

cut and sewn design on leg opening

13



EMOTION 2.0 SHIRT

Art. 2003163

Size 128, 140, 152, 164
S, M, L, XL, XXL, 3XL

Material 100% polyester

01 black/anthra, **02** kempblue/anthra, **03** red/chilired,
04 royal/navy, **05** white/anthra, **06** lime yellow/dove blue,
07 hope green/dragon green, **08** anthra/kempblue,
09 black/red/yellow



EMOTION 2.0 SHORTS

Art. 2003165

Size 128, 140, 152, 164
S, M, L, XL, XXL, 3XL

Material 100% polyester

09 black/red/yellow, **11** anthra/black, **12** chilired/red,
13 navy/royal, **14** dove blue/lime yellow,
15 dragon green/hope green, **16** anthra/kempblue



INCLUSIVE 2023

ALTERNATIVE CLASSIC SHORTS ON PAGE 144



Alina Bohnen



04

elastic Kempa- and K-label prints



round neck collar with neck tape

cut and sewn design on front and back

embossed lines on the front

tailored for women

elastic Kempa- and K-label prints



tailored for women

without inside slip

cut and sewn design on leg opening

13



EMOTION 2.0 SHIRT WOMEN

Art. 2003164

Size XS, S, M, L, XL, XXL
Size Colour 10 XS, S, M, L, XL, XXL, 3XL

Material 100% polyester

01 black/antra, **02** kempablue/antra, **03** red/chilired,
04 royal/navy, **05** white/antra, **06** lime yellow/dove blue,
07 hope green/dragon green, **09** black/red/yellow,
10 electric purple/magenta



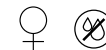
EMOTION 2.0 SHORTS WOMEN

Art. 2003166

Size XS, S, M, L, XL, XXL
Size Colour 10 XS, S, M, L, XL, XXL, 3XL

Material 100% polyester

09 black/red/yellow, **10** electric purple/magenta, **11** antra/black,
12 chilired/red, **13** navy/royal, **14** dove blue/lime yellow,
15 dragon green/hope green, **16** antra/kempablue



INCLUSIVE 2023

ALTERNATIVE CLASSIC SHORTS ON PAGE 145



Krešimir Kozina

Kempa embroidery and K-label prints

cut and sewn design on front and back

side pockets with zip

side pockets with zip

zip on leg opening

09

hood with rib

embossed lines on the front

elastic rib on sleeve and hem opening

cord inside waistband

Kempa embroidery and K-label print

01





01

01

02

03



01

04

EMOTION 2.0 HOOD JACKET

Art. 2002256

Size 128, 140, 152, 164
S, M, L, XL, XXL, 3XL, 4XL

Material 100% polyester

01 black/anthra, **03** chilired/red, **09** black/red/yellow,
13 navy/royal, **14** dove blue/lime yellow,
15 dragon green/hope green, **16** anthra/kempablu



EMOTION 2.0 PANTS

Art. 2003037

Size 116, 128, 140, 152, 164
S, M, L, XL, XXL, 3XL, 4XL

Material 100% polyester

01 black, **02** navy, **03** dove blue, **04** anthra



INCLUSIVE 2023

JACKET AND PANTS AVAILABLE INDIVIDUALLY

ALTERNATIVE PANTS ON PAGE 136



Xenia Smits

Kempa embroidery and K-label prints

cut and sewn design on front and back

tailored for women

side pockets with zip

tailored for women



01

hood with rib

embossed lines on the front

side pockets with zip

elastic rib on sleeve and hem opening

cord inside waistband

Kempa embroidery and K-label prints

zip on leg opening

01



EMOTION 2.0 HOOD JACKET WOMEN

Art. 2002257

Size XS, S, M, L, XL, XXL

Material 100% polyester

01 black/antra, **03** chilired/red, **09** black/red/yellow,
13 navy/royal, **14** dove blue/lime yellow,
15 dragon green/hope green, **16** anthra/kempablue



EMOTION 2.0 PANTS WOMEN

Art. 2003038

Size XS, S, M, L, XL, XXL

Material 100% polyester

01 black, **02** navy, **03** dove blue, **04** anthra



INCLUSIVE 2023

JACKET AND PANTS AVAILABLE INDIVIDUALLY

ALTERNATIVE PANTS ON PAGE 136



Björn Zintel



16

Kempa embroidery and K-label prints

cut and sewn design on front and back



side pockets with zip

binding on sleeve and hem opening

cord inside waistband

side pockets with zip



Kempa embroidery and K-label print

zip on leg opening

04



EMOTION 2.0 POLY JACKET

Art. 2002258

Size 116, 128, 140, 152, 164
S, M, L, XL, XXL, 3XL, 4XL

Material 100% polyester

01 black/antra, **03** chilired/red, **05** white/antra, **13** navy/royal,
14 dove blue/lime yellow, **15** dragon green/hope green,
16 antra/kempablue



EMOTION 2.0 PANTS

Art. 2003037

Size 116, 128, 140, 152, 164
S, M, L, XL, XXL, 3XL, 4XL

Material 100% polyester

01 black, **02** navy, **03** dove blue, **04** antra



INCLUSIVE 2023

JACKET AND PANTS AVAILABLE INDIVIDUALLY

ALTERNATIVE PANTS ON PAGE 136



Jannik Kohlbacher



03

hood with rib

Kempa embroidery and K-label prints

cut and sewn design on front and back

1/4 zip on front

binding on sleeve and hem opening

cord inside waistband

side pockets with zip

Kempa embroidery and K-label print

zip on leg opening

02

back



side



01



01

05



01

09



01

13



04

14



03

15



01

16



04

EMOTION 2.0 QUARTER ZIP HOODY

Art. 2002267

Size 116, 128, 140, 152, 164
S, M, L, XL, XXL, 3XL, 4XL

Material 100% polyester

01 black/antra, **03** navy/royal, **05** chilired/red,
09 black/red/yellow, **13** white/antra, **14** dove blue/lime yellow,
15 dragon green/hope green, **16** antra/kempablu



EMOTION 2.0 PANTS

Art. 2003037

Size 116, 128, 140, 152, 164
S, M, L, XL, XXL, 3XL, 4XL

Material 100% polyester

01 black, **02** navy, **03** dove blue, **04** antra



INCLUSIVE 2023

JACKET AND PANTS AVAILABLE INDIVIDUALLY

ALTERNATIVE PANTS ON PAGE 136



Luis Foege

Kempa embroidery and K-label prints

03

round neck collar with neck tape

cut and sewn design on front and back



embossed lines on the front

elastic rib on collar, sleeves and hem



back



side



01



02



04



07



09



14



EMOTION 2.0 LONGSLEEVE

Art. 2002268

Size 152, 164
S, M, L, XL, XXL, 3XL

Material 100% polyester

01 black/anthra, **02** kempablue/anthra, **03** red/chilired,
04 royal/navy, **07** hope green/dragon green, **09** black/red/yellow,
14 dove blue/lime yellow



INCLUSIVE 2023



Daniel Rebmann

04

elastic Kempa- and K-label prints

round neck collar with neck tape

cut and sewn design on front and back

embossed lines on the front

rib on sleeve opening





EMOTION 2.0 TRAINING TOP

Art. 2002149

Size 116, 128, 140, 152, 164
S, M, L, XL, XXL, 3XL, 4XL

Material 100% polyester

01 black/antra, **02** kempablue/antra, **03** red/chilired,
04 royal/navy, **07** hope green/dragon green,
14 dove blue/lime yellow



INCLUSIVE 2023



Krešimir Kozina

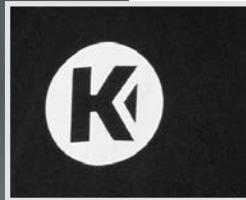
contrast silicon tape on front

01

round neck collar with neck tape



elastic Kempa- and K-label prints



back



side



02



03



04



05



06



07



EMOTION 2.0 POLY SHIRT

Art. 2003184

Size 116, 128, 140, 152, 164
S, M, L, XL, XXL, 3XL, 4XL

Material 100% polyester

01 black/anthra, **02** kempablue/anthra, **03** red/chilired,
04 royal/navy, **05** white/anthra, **06** lime yellow/dove blue,
07 hope green/dragon green



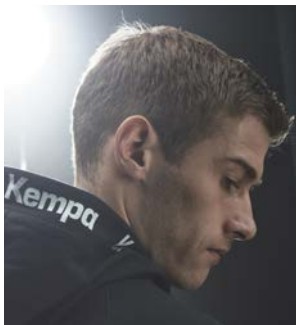
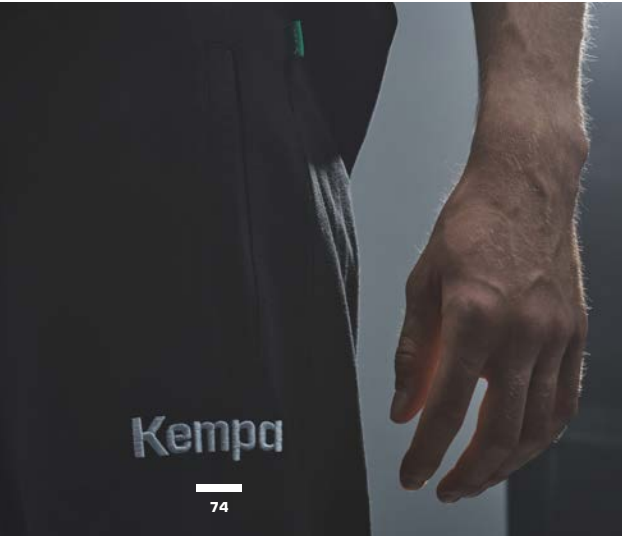
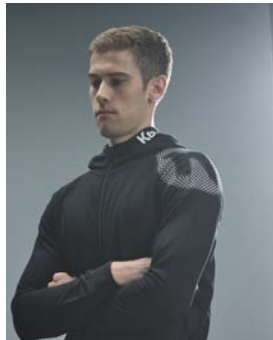
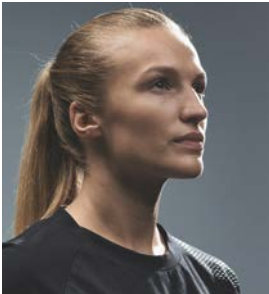
INCLUSIVE 2023



CORE 26

LEISURE, TRAINING

♻️ INCLUSIVE 2026



CORE 26 T-SHIRT

Art. 2003661

CORE 26 SWEATSHORTS

Art. 2003667



CORE 26 T-SHIRT WOMEN

Art. 2003662



CORE 26 HOOD JACKET

Art. 2003663

CORE 26 PANTS

Art. 2003665



CORE 26 HOOD JACKET

Art. 2003664

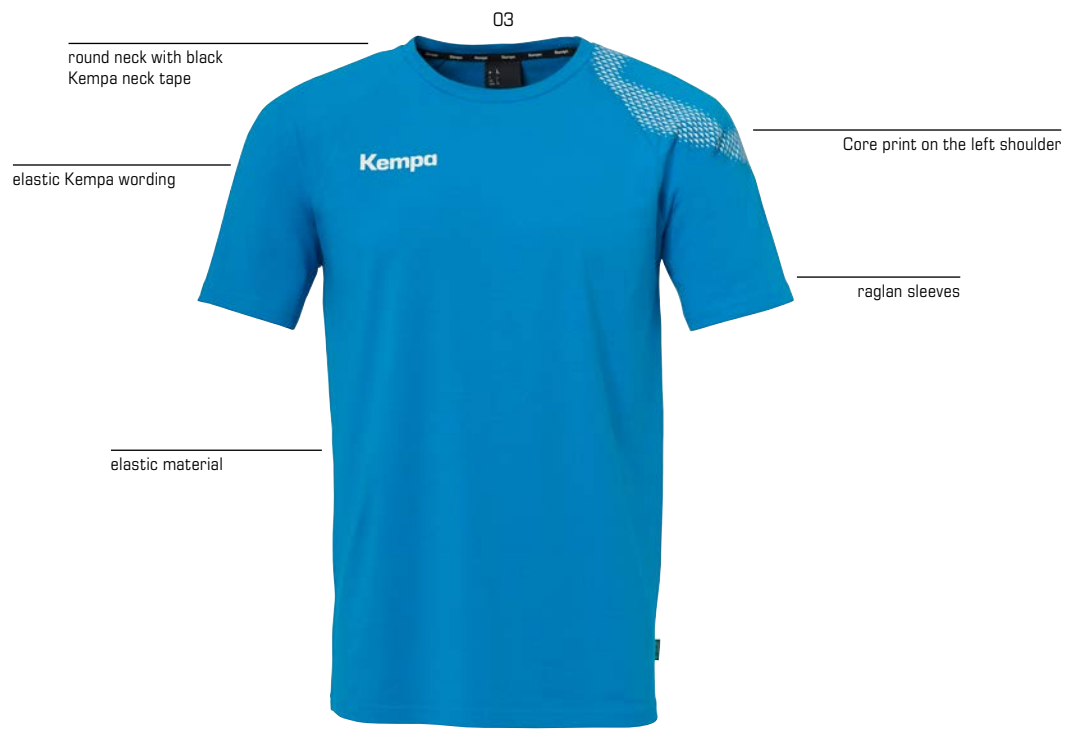
CORE 26 PANTS WOMEN

Art. 2003666





Andreas Wolff



03

round neck with black Kempa neck tape

elastic Kempa wording

Core print on the left shoulder

raglan sleeves

elastic material



Kempa



Core print on the back of the right leg



leg cuffs with open edges

elastic waistband with adjustable cords

side pockets

elastic rib on the waistband



02

Kempa embroidery

Kempa

back

side

01

02

04

05



01

01

01

02

06

10



01

01

CORE 26 T-SHIRT



Art. 2003661

Size 116, 128, 140, 152, 164
S, M, L, XL, XXL, 3XL, 4XL

Material 100% cotton (organic)
05 85% cotton (organic), 15% viscose

01 black, **02** white, **03** kempablue, **04** red,
05 dark grey mélange, **06** hope green, **10** royal



CORE 26 SWEATSHORTS



Art. 2003667

Size 116, 128, 140, 152, 164
S, M, L, XL, XXL, 3XL, 4XL

Material **01** 60% cotton,
40% polyester (recycled)
02 85% cotton (organic), 15% viscose

01 black, **02** dark grey mélange



INCLUSIVE 2026

ALTERNATIVE CLASSIC SHORTS ON PAGE 144



Franziska Peter

01

raglan sleeves

round neck with black Kempa neck tape

Core print on the left shoulder

elastic Kempa wording

elastic material

tailored for women



back



side



02



03



04



05



06



10



CORE 26 T-SHIRT WOMEN



Art. 2003662

Size XS, S, M, L, XL, XXL

Material 97% cotton (organic), 3% elastane

01 black, **02** white, **03** kempablue, **04** red, **05** dark grey mélange, **06** hope green, **10** royal



INCLUSIVE 2026



Tim Nothdurft



10

zip garage on collar

hood with Kempa wording and lining in contrast colour

Core print on left shoulder

zips in contrast colour

two pockets with zip



raglan sleeves

elastic waistband with adjustable cords

side pockets

Kempa embroidery

Core print on the back of the right leg

elastic rib on the waistband and leg cuffs



01



CORE 26 HOOD JACKET



Art. 2003663

Size 116, 128, 140, 152, 164
S, M, L, XL, XXL, 3XL, 4XL

Material 60% cotton, 40% polyester (recycled)
05 85% cotton (organic), 15% viscose

01 black, 03 kempablue, 04 red, 05 dark grey mélange,
06 hope green, 10 royal



CORE 26 PANTS



Art. 2003665

Size 116, 128, 140, 152, 164
S, M, L, XL, XXL, 3XL, 4XL

Material 01 60% cotton,
40% polyester (recycled)
02 85% cotton (organic), 15% viscose

01 black, 02 dark grey mélange



INCLUSIVE 2026

JACKET AND PANTS AVAILABLE INDIVIDUALLY

ALTERNATIVE PANTS ON PAGE 136



Franziska Peter



04

zip garage on collar

raglan sleeves

zips in contrast colour

two pockets with zip

side pockets

tailored for women

Core print on the back of the right leg

hood with Kempa wording and lining in contrast colour

Core print on left shoulder

tailored for women

elastic waistband with adjustable cords

Kempa embroidery

elastic rib on the waistband and leg cuffs

01



CORE 26 HOOD JACKET WOMEN



Art. 2003664

Size XS, S, M, L, XL, XXL

Material 85% cotton (organic), 15% viscose

01 black, **03** kempablue, **04** red, **05** dark grey mélange,
06 hope green, **10** royal



CORE 26 PANTS WOMEN



Art. 2003666

Size XS, S, M, L, XL, XXL

Material **01** 60% cotton,
40% polyester (recycled)
02 85% cotton (organic), 15% viscose

01 black, **02** dark grey mélange



INCLUSIVE 2026

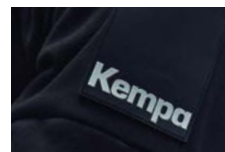
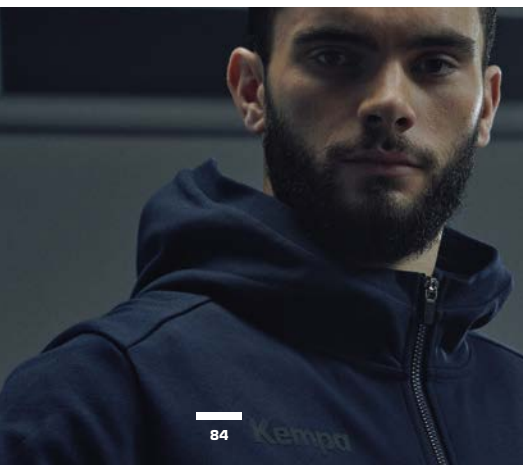
JACKET AND PANTS AVAILABLE INDIVIDUALLY

ALTERNATIVE PANTS ON PAGE 136



STATUS

INCLUSIVE 2024



**STATUS
HOOD JACKET**
Art. 2003633



**STATUS HOOD
JACKET WOMEN**
Art. 2003634



TRAINING TOP
Art. 2003641



STATUS POLO SHIRT
Art. 2003637



STATUS T-SHIRT
Art. 2003638



**STATUS T-SHIRT
WOMEN**
Art. 2003639



TEAM T-SHIRT
Art. 2002091



STATUS PANTS
Art. 2003635



**STATUS PANTS
WOMEN**
Art. 2003636



STATUS SHORTS
Art. 2003640

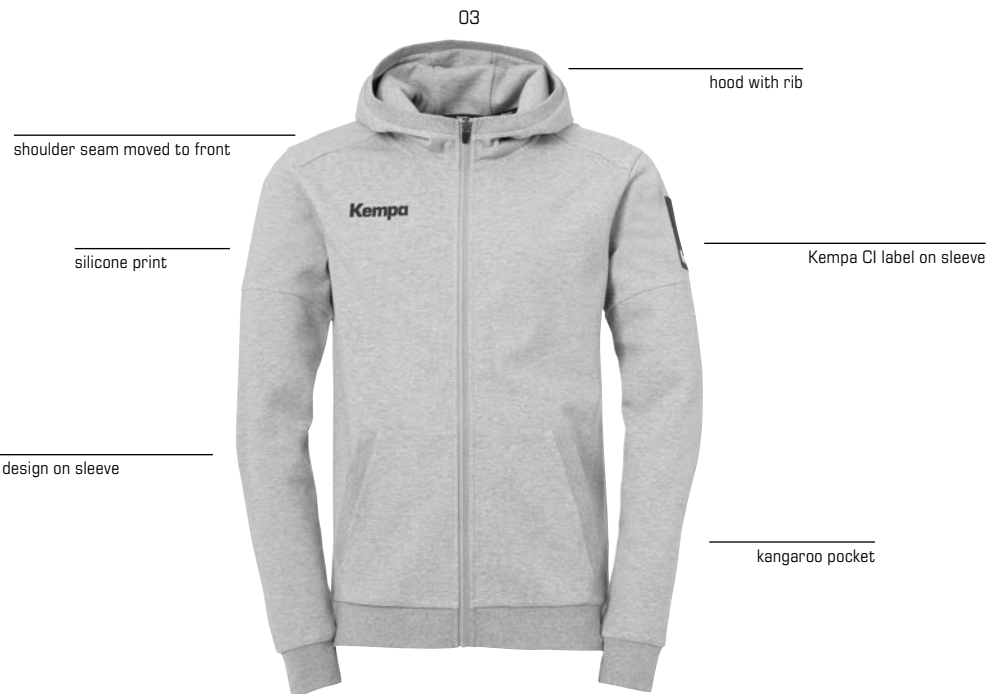


K-FLOAT
Art. 2008570





Andreas Wolff



back

01



side

02



STATUS HOOD JACKET

Art. 2003633

Size S, M, L, XL, XXL, 3XL

Material 72% cotton, 28% polyester

01 black, **02** navy, **03** grey mélange

INCLUSIVE 2024

01



back



side



03



STATUS HOOD JACKET WOMEN

Art. 2003634

Size XS, S, M, L, XL, XXL

Material 72% cotton, 28% polyester

01 black, **03** grey mélangé



INCLUSIVE 2024

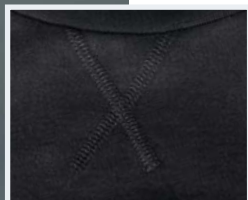


Laetitia Quist





Uwe Gensheimer



01

flatlock stitch below
crew neck

round neck



back

elastic rib on sleeve and
hem opening

03



05



TRAINING TOP

Art. 2003641

Size 116, 128, 140, 152, 164
S, M, L, XL, XXL, 3XL, 4XL

Material 80% cotton, 20% polyester

01 black, **03** navy, **05** dark grey mélange





STATUS PANTS

Art. 2003635
Size S, M, L, XL, XXL, 3XL
Material 72% cotton, 28% polyester
01 black, **02** navy

INCLUSIVE 2024

STATUS PANTS WOMEN

Art. 2003636
Size XS, S, M, L, XL, XXL
Material 72% cotton, 28% polyester
01 black



INCLUSIVE 2024



K-FLOAT

Art. 2008570
Size 3,5-12, 13, 14, 15
Weight 193g/Size UK 8
Material upper material: textile, lining: textile, sole: ethylene vinyl acetate + rubber
02 black, **06** navy



Jannik Kohlbacher



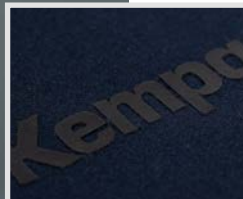
STRUCTURED PIQUÉ



01



03



back



side

STATUS POLO SHIRT

Art. 2003637

Size S, M, L, XL, XXL, 3XL

Material 65% polyester, 35% cotton Piqué

01 black, **02** navy, **03** grey mélangé

INCLUSIVE 2024

01



cord inside waistband

side pockets with zipper

silicone print

back

side



02



STATUS SHORTS

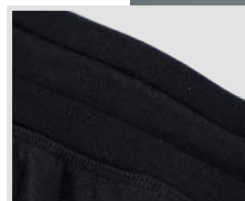
Art. 2003640

Size S, M, L, XL, XXL, 3XL

Material 72% cotton, 28% polyester

01 black, **02** navy

INCLUSIVE 2024



Luis Foege





Björn Zintel



shoulder seam moved to front

Very flexible fabric

02



Kempa CI label on sleeve

back

side



01

03



04



STATUS T-SHIRT

Art. 2003638

Size S, M, L, XL, XXL, 3XL

Material 97% cotton, 3% elastane

01 black, **02** navy, **03** grey mélange, **04** white

INCLUSIVE 2024

01

shoulder seam moved to front



Kempa CI label on sleeve

tailored for women

Very flexible fabric

back



side



03



STATUS T-SHIRT WOMEN

Art. 2003639

Size XS, S, M, L, XL, XXL

Material 97% cotton, 3% elastane

01 black, **03** grey mélange



INCLUSIVE 2024



Franziska Peter



Björn Zintel

round neck single
jersey t-shirt

06



Kempa CI label
on left sleeve

back



side



10



07



25



TEAM T-SHIRT

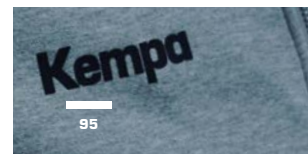
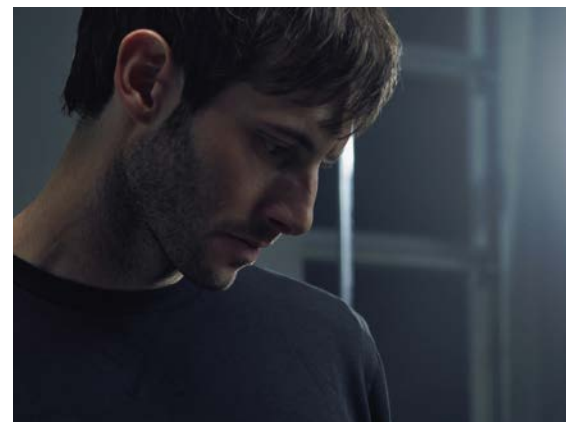
Art. 2002091

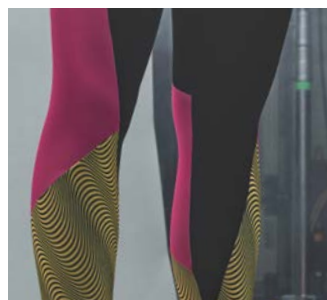
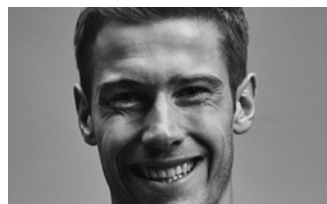
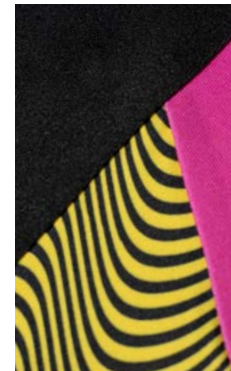
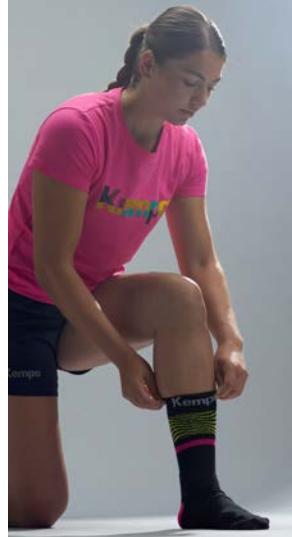
Size 116, 128, 140, 152, 164
S, M, L, XL, XXL, 3XL, 4XL

Material 100% cotton, 160g/m²
dark grey mélange: 85% cotton (organic), 15%
viscose

06 black, **07** white, **10** navy, **25** dark grey mélange







**T-SHIRT
BACK2COLOUR**
Art. 2003631



**T-SHIRT WOMEN
BACK2COLOUR**
Art. 2003683



**HOOD JACKET
BACK2COLOUR**
Art. 2003630



**TRAINING TOP WOMEN
BACK2COLOUR**
Art. 2003682



**TIGHTS WOMEN
BACK2COLOUR**
Art. 2003684



**SOCKS
BACK2COLOUR**
Art. 2003685





Lukas Stutzke



round neck with elastic rib
and black neck tape



back



side



01



Kempa prints on the front and back

T-SHIRT BACK2COLOUR



Art. 2003631

Size 116, 128, 140, 152, 164
S, M, L, XL, XXL, 3XL

Material 97% cotton (organic), 3% elastane

01 black



INCLUSIVE 2023

11

round neck with elastic rib
and black neck tape



Kempa prints on the front and back

tailored for women



back



side



T-SHIRT WOMEN BACK2COLOUR



Art. 2003683

Size XS, S, M, L, XL, XXL

Material 97% cotton (organic), 3% elastane

01 black, **11** pink



01



INCLUSIVE 2023



Adriana Marksteiner



Daniel Rebmann



Kempa woven loop on hood opening



cut sewn design on front with woven fabric

K-logo print on front



Kempa wording print on back left sleeve



rib on hood opening, hem, cuffs pocket welt

One-seam hood with Kempa label in center front

front zipper pockets

back



side



HOOD JACKET BACK2COLOUR



Art. 2003630

Size 116, 128, 140, 152, 164
S, M, L, XL, XXL, 3XL

Material 55% cotton, 45% polyester (recycled)

01 black



INCLUSIVE 2023

01

name label on the inside of the collar

round neckline

fabric insert with K-label
print on the front



Kempa print on
the left sleeve

back

side



TRAINING TOP WOMEN BACK2COLOUR



Art. 2003682

Size S, M, L, XL, XXL, 3XL

Material 55% cotton, 45% polyester (recycled)

01 black



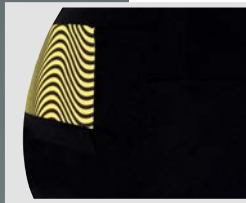
INCLUSIVE 2023



Franziska Peter



Alina Bohnen



10

High-waist Tights

smartphone pocket

elastic Kempa and K-label prints

Kempa

breathable contrast open mesh inserts

tailored for women

design elements in contrast colour

7/8 length

back



side



TIGHTS WOMEN BACK2COLOUR



Art. 2003684

Size XS, S, M, L, XL, XXL

Material 89% polyester (recycled), 11% elastane

10 black/pink



INCLUSIVE 2023

10



big Kempa wording
on center front top

design elements in contrast colour

sock with reinforced sole
and functional flex areas

back



front



09



SOCKEN BACK2COLOUR

Art. 2003685

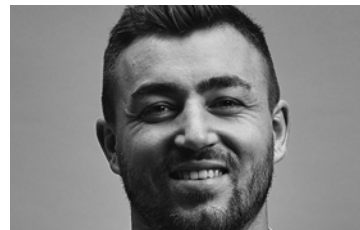
Size 31-35, 36-40, 41-45,
46-50

Material 80% cotton, 15% polyamide, 5% elastane

09 black/green, **10** black/pink

INCLUSIVE 2023





**T-SHIRT
BLACK & WHITE**
Art. 2003678



**T-SHIRT WOMEN
BLACK & WHITE**
Art. 2003679



**HOOD SHIRT
BLACK & WHITE**
Art. 2003680



**HOOD SHIRT WOMEN
BLACK & WHITE**
Art. 2003681



**K-LINE BAG PRO
BLACK & WHITE**
Art. 2004887



**SYNERGY SPECTRUM PRIMO
BACK2COLOUR**
Art. 2001890



**LEO
BLACK & WHITE**
Art. 2001892



**SOFT GRIP
BLACK & WHITE**
Art. 2001895



Jannik Kohlbacher



Established-Logo on the back

back



side



05



round neck with elastic rib and black neck tape

Kempa and Player print on the front

T-SHIRT BLACK & WHITE



Art. 2003678

Size S, M, L, XL, XXL, 3XL

Material 97% cotton (organic), 3% elastane

05 white



LIMITED EDITION

05

Established-logo on the back

round neck with elastic rip and black neck tape

tailored for women

Kempa and Player print on the front



back

side



T-SHIRT WOMEN BLACK & WHITE



Art. 2003679

Size XS, S, M, L, XL, XXL

Material 97% cotton (organic), 3% elastane

05 white



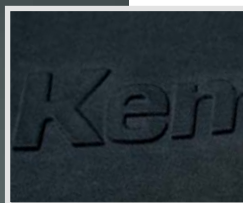
LIMITED EDITION



Annika Ingenpaß



Andreas Wolff



overcut shoulder

3D-Kempa print on the front

Established-logo on the back

trendy oversize cut

01



back



side



HOOD SHIRT BLACK & WHITE



Art. 2003680

Size S, M, L, XL, XXL, 3XL

Material 60% cotton (organic),
40% polyester (recycled)

01 black



LIMITED EDITION

01

overcut shoulder

3D-Kempa print on the front

Established-logo on the back

trendy oversize cut



back

side



HOOD SHIRT WOMEN BLACK & WHITE



Art. 2003681

Size XS, S, M, L, XL, XXL

Material 60% cotton (organic),
40% polyester (recycled)

01 black



LIMITED EDITION



Xenia Smits

07



Kempa Birthday Logo – since 2002

padded, adjustable shoulder straps with velcro closure

sport bag with backpack function

carry handle on the side

side pocket with zip

side compartment with zip

seams in contrast colors

logo prints on the sides and the bottom

front



back



LIMITED EDITION

K-LINE BAG PRO BLACK & WHITE



Art. 2004887

Size 60L / M

Material 53% polyester, 47% polyester (recycled)

07 black/white

04



high quality match and training ball with a unique 30-panel-construction

soft and grippy upper material with Kempa embossing for more grip and outstanding ball control

very good rebound with a comfortable feel for the ball thanks to the additional foam layer

latex bladder with textile lamination prevents from pumping over and provides air retention at the same time

suitable for the use of resin

Innovative surface structure made of PU material for unique grip

LIMITED EDITION

PVC FREE

SYNERGY SPECTRUM PRIMO BLACK & WHITE

Art. 2001890

Size 0, 1, 2, 3

04 black



08



durable training ball

grippy upper material with Kempa embossing for better grip and ball control

comfortable feel for the ball thanks to the soft foam lamination

the latex bladder retains its shape and provides outstanding rebound and air retention at the same time

suitable for the use of resin

Kempa Birthday Logo – since 2002

LIMITED EDITION

PVC FREE

LEO BLACK & WHITE

Art. 2001892

Size 0, 1, 2, 3

08 black



03



methodology ball for kids

soft and easy to push handball

grippy upper material

enables better ball control and thus a higher throwing quality

supports children in learning the correct throwing technique

not suitable for dribbling

Kempa Birthday Logo – since 2002

LIMITED EDITION

PVC FREE

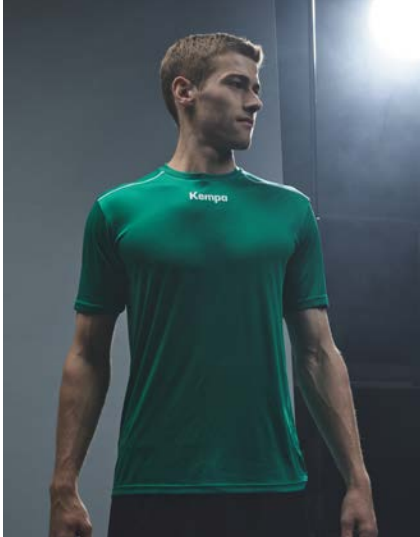
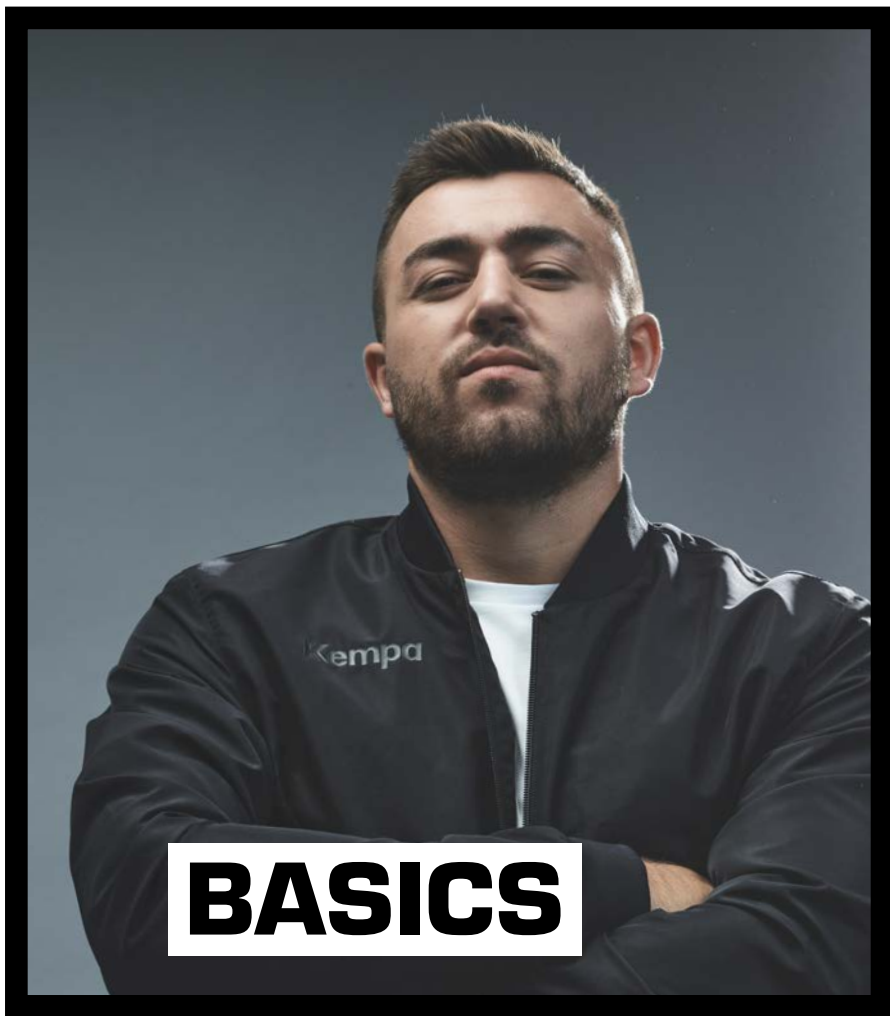
SOFT GRIP BLACK & WHITE

Art. 2001895

Size one size

03 black





POLY SHIRT
Art. 2002346



GRAPHIC T-SHIRT
Art. 2002283



CLASSIC PANTS WOMEN
Art. 2005072



CLASSIC SHORTS
Art. 2003160



**POLY SHIRT
WOMEN**
Art. 2002350



PROMO T-SHIRT
Art. 2002092



TEAM T-SHIRT
Art. 2002091



**PRIME POLO
SHIRT**
Art. 2002159



**CLASSIC POLO
SHIRT**
Art. 2002349



**POLY POLO
SHIRT**
Art. 2002348



**POLO SHIRT
WOMEN**
Art. 2002347



TRAINING TOP
Art. 2003641



HOODY
Art. 2003670



**GRAPHIC
HOODY**
Art. 2003029



**GRAPHIC
T-SHIRT WOMEN**
Art. 2002285



ACTIVE JACKET
Art. 2003677



RAIN JACKET
Art. 2003675



**SOFTSHELL
JACKET**
Art. 2003672



**SOFTSHELL
JACKET WOMEN**
Art. 2003673



COLLEGE JACKET
Art. 2003676



**PUFFER
HOOD JACKET**
Art. 2003674



WINTER JACKET
Art. 2003653



MODERN PANTS
Art. 2003671



CLASSIC PANTS
Art. 2005069



**LITE TRAINING
PANTS**
Art. 2003626



**LITE TRAINING
PANTS WOMEN**
Art. 2003628



**PERFORMANCE
PANTS**
Art. 2005075



**PERFORMANCE
PANTS WOMEN**
Art. 2005076



SWEAT PANTS
Art. 2005884



**GOALKEEPER
PANTS**
Art. 2005890



**PRESENTATION
PANTS**
Art. 2005049



**PRESENTATION
PANTS
WOMEN**
Art. 2005039



TRAINING TIGHTS
Art. 2002236



**TRAINING TIGHTS
WOMEN**
Art. 2002237



**CLASSIC SHORTS
WOMEN**
Art. 2003210



WEBSHORTS
Art. 2003205



**POCKET
SHORTS**
Art. 2003108



SKORT
Art. 2003099



**PERFORMANCE
TIGHTS WOMEN**
Art. 2003642



TIGHTS WOMEN
Art. 2003161



**ACTIVE SHORTS
WOMEN**
Art. 2003669



SOCKS
Art. 2003541/
48/36/45



**REFEREE
SHIRT**
Art. 2003101



**REFEREE
SHORT**
Art. 2003102



Tim Nothdurft



13
neck tape in contrast colour

NEW



flatlock seam in contrast colour

Kempa wording and K-label print

FUNCTION SHIRT

back



POLY SHIRT



Art. 2002346

Size 116, 128, 140, 152, 164
S, M, L, XL, XXL, 3XL

Material 100% polyester
05, 13 100% polyester (recycled)

01 kempablue, **02** red, **04** green, **05** dark grey mélange, **06** black, **07** white, **08** lime yellow, **09** royal, **11** deep red, **13** lagoon



NEW

13



neck tape in contrast colour

flatlock seam in contrast colour

Kempa wording and K-label print

tailored for women



FUNCTION SHIRT

back



Alina Bohnen



NEW

POLY SHIRT WOMEN



Art. 2002350

Size XS, S, M, L, XL, XXL

Material 100% polyester
05, 13 100% polyester (recycled)

01 kempablue, 02 red, 04 green, 05 dark grey mélange, 06 black, 07 white, 08 lime yellow, 09 royal, 11 deep red, 13 lagoon





Daniel Rebmann

13

NEW

crew neck single jersey T-shirt



print on chest

Kempa CI label on left sleeve

back



PROMO T-SHIRT

Art. 2002092

Size 116, 128, 140, 152, 164
S, M, L, XL, XXL, 3XL, 4XL

Material 100% cotton
13 60% cotton, 40% polyester (recycled)
25 85% cotton (organic), 15% viscose

01 kempblue, **02** red, **04** green, **06** black, **07** white,
08 lime yellow, **09** royal, **13** lagoon, **25** dark grey mélange



13
round neck single jersey t-shirt

NEW



Kempa CI label on left sleeve

side



NEW

TEAM T-SHIRT

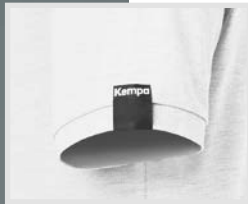
Art. 2002091
Size 116, 128, 140, 152, 164
 S, M, L, XL, XXL, 3XL, 4XL
Material 100% cotton
13 60% cotton, 40% polyester (recycled)
25 85% cotton (organic), 15% viscose
01 kempablue, **02** red, **04** green, **06** black, **07** white,
08 lime yellow, **09** royal, **10** navy, **13** lagoon,
25 dark grey melange



Adriana Marksteiner



Lukas Stutzke



Kempa embroidery
on chest

rib on sleeve opening



07

button panel and neck tape in contrast color

Kempa woven label
on left sleeve

STRUCTURED PIQUE

side slit with contrast bartack



back

02

03

06

PRIME POLO SHIRT

Art. 2002159

Size 140, 152, 164
S, M, L, XL, XXL, 3XL, 4XL

Material 65% polyester, 35% cotton Piqué

02 black/white, **03** grey mélange/black,
06 navy/white, **07** white/black



STATUS POLO SHIRT ON PAGE 90

09

Kempa embroidery in contrast colour



button panel with three buttons

JERSEY

side slit

back



01



02



06



07



CLASSIC POLO SHIRT

Art. 2002349

Size 128, 140, 152, 164
S, M, L, XL, XXL, 3XL, 4XL

Material 60% cotton, 40% polyester

01 kempablue, **02** red, **06** black, **07** white, **09** royal



Tim Nothdurft





Björn Zintel



POLY POLO SHIRT

Art. 2002348

Size 128, 140, 152, 164
S, M, L, XL, XXL, 3XL

Material 100% polyester

01 kempablue, **02** red, **06** black, **07** white, **09** royal



07



button panel with three buttons

Kempa embroidery on chest

tailored for women

FUNCTION POLO

back

01

02

06

09



POLO SHIRT WOMEN

Art. 2002347

Size XS, S, M, L, XL, XXL

Material 57% cotton, 38% polyester, 5% elastane;
Piqué

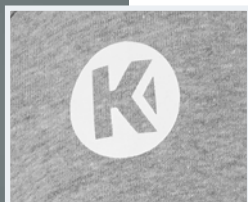
01 kempablue, **02** red, **06** black, **07** white, **09** royal



Laetitia Quist



Lukas Stutzke



05

round neckline

name label on the inside of the collar

flatlock seam on collar

elastic Kempa and K-label prints



NEW

elastic rib cuffs and waistband

side pockets

right pocket with zip

gusset for high wearing comfort

elastic waistband with adjustable cords

Kempa

Kempa embroidery

unisex

loose fit

elastic rib on the leg hems

01



TRAINING TOP

Art. 2003641

Size 116, 128, 140, 152, 164
S, M, L, XL, XXL, 3XL, 4XL

Material 80% cotton, 20% polyester
05 85% cotton, 15% viscose

01 black, **02** red, **03** navy, **04** hope green, **05** dark grey mélange,
07 lagoon, **08** kempablue, **09** royal



NEW

MODERN PANTS

Art. 2003671

Size 116, 128, 140, 152, 164
S, M, L, XL, XXL, 3XL

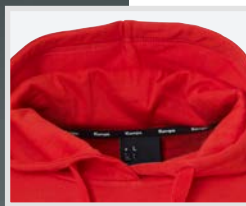
Material **01** 60% cotton, 40% polyester
02 85% cotton, 15% viscose

01 black, **02** dark grey mélange





Tim Nothdurft



04
hood with cord



elastic Kempa and K-label
prints in tone-on-tone



basic design



very comfortable material



back



01



03



05



06



07



08



09

NEW

HOODY

Art. 2003670

Size 116, 128, 140, 152, 164
S, M, L, XL, XXL, 3XL, 4XL

Material 80% cotton, 20% polyester
05 85% cotton, 15% viscose

01 black, **03** kempablue, **04** red, **05** dark grey mélange,
06 hope green, **07** lagoon, **08** navy, **09** royal



11

kids sizes without cords on hood

hood with cords

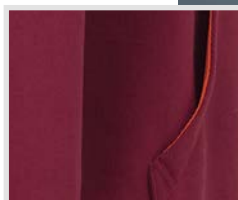
graphic print

kangaroo pocket

elastic rib on sleeve and hem opening

back

side



Daniel Rebmann

GRAPHIC HOODY

Art. 2003029

Size 128, 140, 152, 164
S, M, L, XL, XXL, 3XL

Material 60% cotton, 40% polyester

11 deep red



INCLUSIVE 2025



Joscha Ritterbach



11

round neck collar with contrast neck tape



graphic prints on front and back

back



side



GRAPHIC T-SHIRT

Art. 2002283

Size 116, 128, 140, 152, 164
S, M, L, XL, XXL, 3XL

Material 95% cotton, 5% elastane

11 deep red



INCLUSIVE 2025

11

round neck collar with contrast neck tape



graphic prints on front and back

tailored for women



back

side

02



GRAPHIC T-SHIRT WOMEN

Art. 2002285

Size XS, S, M, L, XL, XXL

Material 95% cotton, 5% elastane

02 white, **11** deep red



GRAPHIC T-SHIRT GIRLS

Art. 2002284

Size 116, 128, 140, 152, 164

Material 95% cotton, 5% elastane

02 white, **11** deep red



INCLUSIVE 2025

GIRL CUT



Laetitia Quist



Uwe Gensheimer



name label on the inside of the collar



reflective Kempa and K-label prints on the front and back



travel-proof ripstop material made of nylon

one pocket with zip on the right side

05



full-length reflective strip on the back

water- and wind-repellent PU coating

extremely light and breathable jacket

unisex cut

elastic binding on the sleeves and waistband

back



side



NEW

ACTIVE JACKET



Art. 2003677

Size 164
S, M, L, XL, XXL, 3XL

Material 100% polyamide (recycled)

05 light grey



INCLUSIVE 2023

01

band collar with stowable hood

name label on the inside of the collar

reflective Kempa prints

Kempa

taped seams

Half lined with mesh

1.000 mm coating

side pockets with zip

unisex cut

elastic sleeve cuffs

hemline with adjustable cord



back

side



NEW

RAIN JACKET

Art. 2003675

Size 128, 140, 152, 164
S, M, L, XL, XXL, 3XL, 4XL

Material 100% polyester

01 black



WATERPROOF 1.000mm

INCLUSIVE 2023



Alina Bohnen



Daniel Rebmann



hood with adjustable cord



name label on the inside of the collar



chest and side pockets with waterproof reflective zip

adjustable velcro closure on sleeve cuffs

waterproof TPU membrane



05

zip garage on collar

hemline with adjustable cord

3.000 mm Wassersäule

elastic and reflective Kempa and K-label prints

raglan sleeves

back



side



06



NEW

SOFTSHELL JACKET



Art. 2003672

Size 128, 140, 152, 164
S, M, L, XL, XXL, 3XL, 4XL

Material 100% polyester (recycled)

05 sand grey, **06** dark olive



WATERPROOF 3.000mm

INCLUSIVE 2023

05

hood with adjustable cord

zip garage on collar

raglan sleeves

name label on the inside of the collar

waterproof 3.000 mm

waterproof TPU membrane

tailored for women

elastic and reflective Kempa and K-label print

chest and side pockets with waterproof reflective zip

adjustable velcro closure on sleeve cuffs

hemline with adjustable cord



back

side



06



NEW

SOFTSHELL JACKET WOMEN



Art. 2003673

Size XS, S, M, L, XL, XXL

Material 100% polyester (recycled)

05 sand grey, **06** dark olive



WATERPROOF 3.000mm

INCLUSIVE 2023



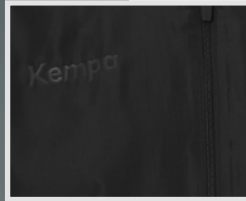
Alina Bohnen



Jannik Kohlbacher



college collar with elastic rib



elastic Kempa and K-label silicone prints in tone-in-tone



two side pockets with press studs

01



name label on the inside of the collar

glued seam

waterproof 1.000 mm

elastic ribbed cuffs and waistband

back



side



NEW

COLLEGE JACKET



Art. 2003676

Size 164
S, M, L, XL, XXL, 3XL, 4XL

Material 100% polyester (recycled)

01 black

INCLUSIVE 2023

01

name label on the inside of the collar

binding on hood opening

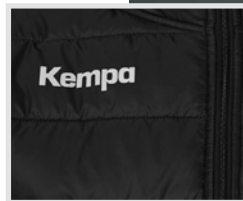
reflective Kempa print



side pockets with zip

elastic binding on the sleeves

hemline with adjustable cord



back

side



PUFFER HOOD JACKET

Art. 2003674

Size 152, 164
S, M, L, XL, XXL, 3XL

Material 100% polyester

01 black



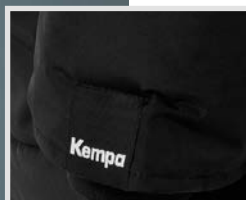
INCLUSIVE 2023



Tim Nothdurft



Tim Nothdurft



01



fixed hood without fur

fleece inside hood collar

kempa reflective screen print on front

cut & sewn design on sleeves

tape seams on hood, shoulder and armhole

2 front pockets

inside pocket open mesh

slit on back an side

flap above front zipper with silicon button ton in ton

inside pocket with zipper

fleece on pocket bag

kempa woven loop on left sleeve opening

back



side



WINTER JACKET

Art. 2003653

Size 164/S, M, L, XL, XXL, 3XL

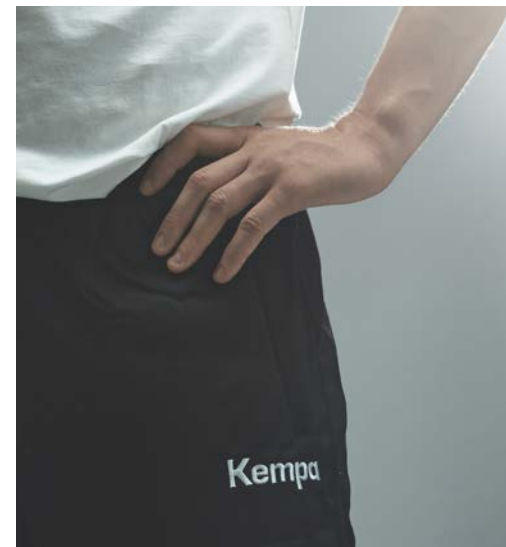
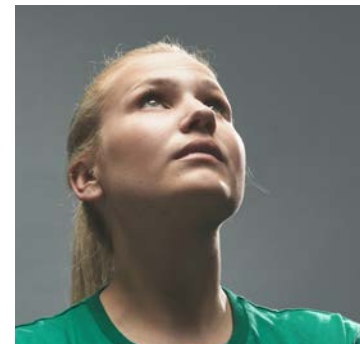
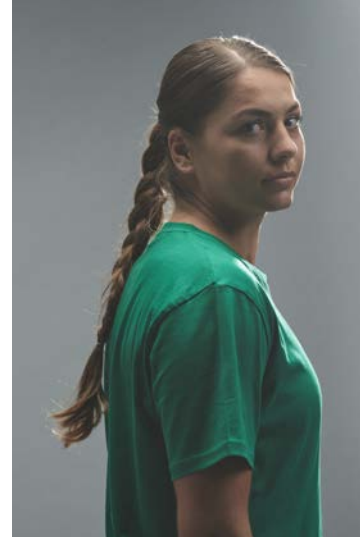
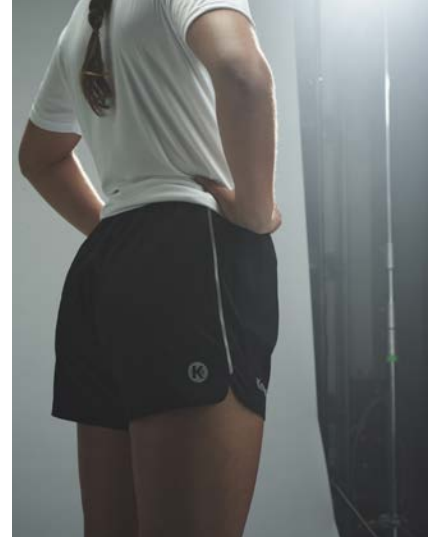
Material 100% polyester, ThermoTech

01 black



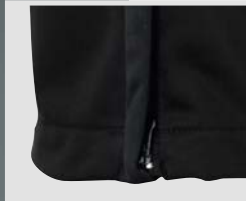
WATERPROOF 1.000mm

INCLUSIVE 2026





Daniel Rebmann



CLASSIC PANTS

Art. 2005069

Size 116, 128, 140, 152, 164
S, M, L, XL, XXL, 3XL, 4XL

Material 100% polyester

01 black



CLASSIC PANTS WOMEN

Art. 2005072

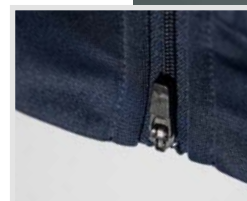
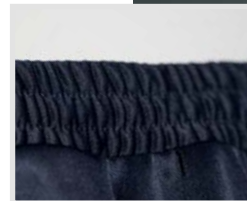
Size XS, S, M, L, XL, XXL

Material 100% polyester

01 black



SOFT TRICOT BRUSHED



NEW

LITE TRAINING PANTS

Art. 2003626

Size 116, 128, 140, 152, 164
S, M, L, XL, XXL, 3XL
01 & 09:
S, M, L, XL, XXL, 3XL, 4XL

Material 100% polyester

01 black, **08** ice grey/fluo red, **09** navy



LITE TRAINING PANTS WOMEN

Art. 2003628

Size XS, M, L, XL, XXL

Material 100% polyester

01 black, **08** ice grey/fluo red, **09** navy



Uwe Gensheimer



Krešimir Kozina



01



cord inside waistband

side pockets with zip

cut and sewn design for more agility

zip on leg opening

back



side



01



PERFORMANCE PANTS

Art. 2005075

Size 116, 128, 140, 152, 164
S, M, L, XL, XXL, 3XL

Material 100% polyester, Interlock

01 black



PERFORMANCE PANTS WOMEN

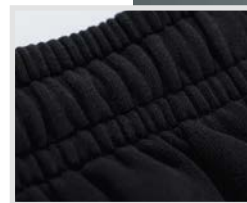
Art. 2005076

Size XS, S, M, L, XL, XXL

Material 100% polyester, Interlock

01 black





SWEAT PANTS

Art. 2005884

Size 116, 128, 140, 152, 164
S, M, L, XL, XXL, 3XL, 4XL

Material 80% cotton, 20% polyester

01 black



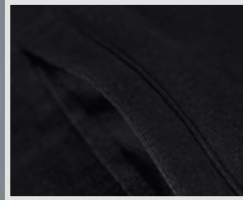
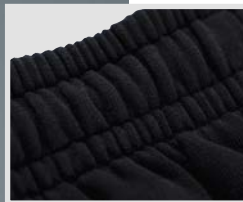
ALSO SUITABLE AS GOALIE PANTS

Björn Zintel





Daniel Rebmann



back



side

GOALKEEPER PANTS

Art. 2005890

Size 128, 140, 152, 164
S, M, L, XL, XXL, 3XL

Material 80% cotton, 20% polyester

01 black



PARTICULARLY SOFT AND COMFORTABLE



PRESENTATION PANTS

Art. 2005049

Size 116, 128, 140, 152, 164
S, M, L, XL, XXL, 3XL, 4XL

Material 100% polyester

01 black



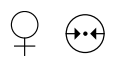
PRESENTATION PANTS WOMEN

Art. 2005039

Size XS, S, M, L, XL, XXL

Material 100% polyester

01 black



ADJUSTABLE LENGTH OF LEG TAG WITH NAME ON INSIDE LIMITED EDITION





Daniel Rebmann



reflective Kempa transfer on front and K-label on back for good visibility in the dark



01
elastic waistband with Kempa wording

stretchy fabric with ergonomic seams for best comfort



KIDS SIZES IN UNISEX CUT



back



side



TRAINING TIGHTS

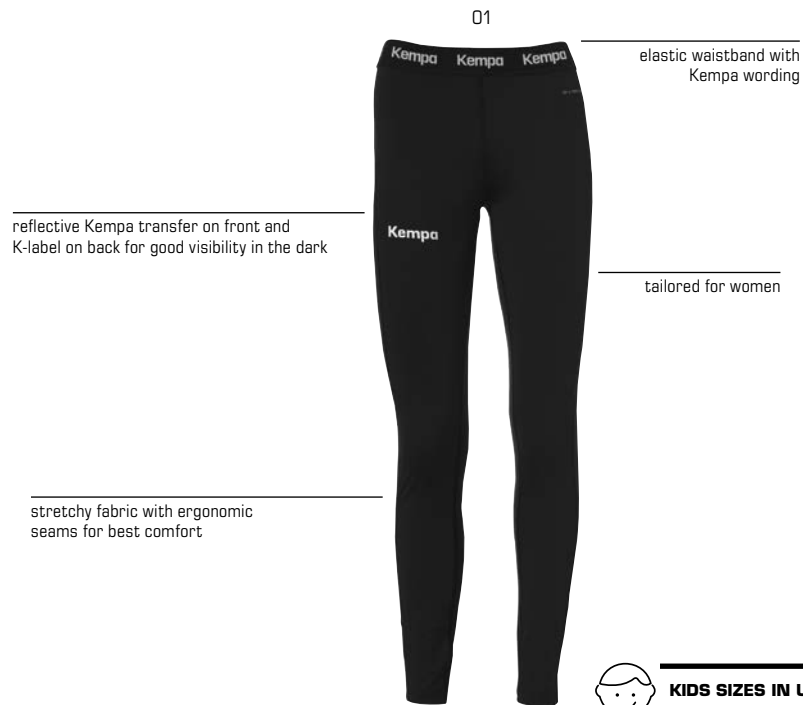
Art. 2002236

Size 128, 140, 152, 164
S, M, L, XL, XXL, 3XL

Material 85% polyester, 15% elastane

01 black





 **KIDS SIZES IN UNISEX CUT**



TRAINING TIGHTS WOMEN

Art. 2002237

Size XS, S, M, L, XL, XXL

Material 85% polyester, 15% elastane

01 black



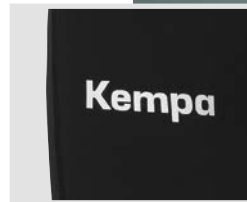
TRAINING TIGHTS

Art. 2002236

Size 128, 140, 152, 164

Material 85% polyester, 15% elastane

01 black



Laetitia Quist



Björn Zintel



welded Kempa wording
on right leg

02



cord inside waistband

polyester short with inside slip



CLASSIC SHORTS

Art. 2003160

Size 116, 128, 140, 152, 164
S, M, L, XL, XXL, 3XL

Material 100% polyester

01 white, **02** black, **03** red, **05** royal, **06** navy, **07** kempblue, **08** lime yellow, **09** anthra



02



adjustable waistband including cord

polyester shorts for women, no inner slip

Kempa wording on right thigh

01



03



04



05



06



08



09



CLASSIC SHORTS WOMEN

Art. 2003210

Size XS, S, M, L, XL, XXL

Material 100% polyester

01 white, **02** black, **03** red, **04** navy, **05** royal, **06** kempablue, **08** lime yellow, **09** anthra



Nathalie Hendrikse



Björn Zintel



cord inside waistband



mesh lining



01

zip pockets

Kempa wording embroidery on left leg



back

side

WEBSHORTS

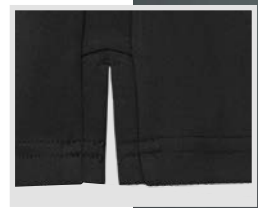
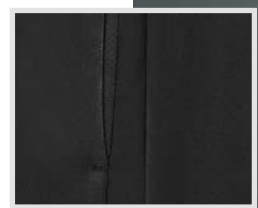
Art. 2003205

Size 128, 140, 152, 164
S, M, L, XL, XXL, 3XL

Material 100% polyester

01 black





Luis Foegel

POCKET SHORTS

Art. 2003108

Size 116, 128, 140, 152, 164
S, M, L, XL, XXL, 3XL

Material 100% polyester

01 black, **02** white





Xenia Smits



SKIRT WITH INTEGRATED PANTS



SKORT

Art. 2003099

Size XS, S, M, L, XL, XXL

Material 100% polyester

01 white, **02** black, **04** navy



SKORT GIRLS

Art. 2003100

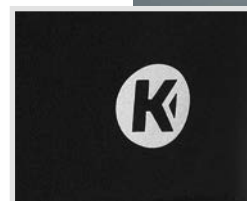
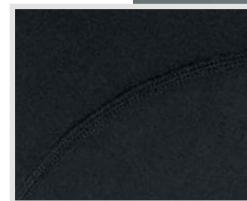
Size 128, 140, 152, 164

Material 100% polyester

01 white, **02** black, **04** navy



01



ALSO GREAT FOR VOLLEYBALL AND GYMNASTICS



Nathalie Hendrikse



PERFORMANCE TIGHTS WOMEN

Art. 2003642

Size XS, S, M, L, XL, XXL

Material 80% nylon, 20% elastane

01 black

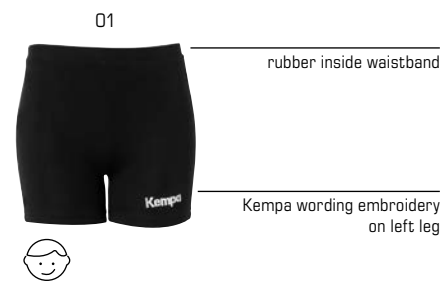




Annika Ingenpaß



ALSO GREAT FOR VOLLEYBALL AND GYMNASTICS



TIGHTS WOMEN

Art. 2003161
Size XS, S, M, L, XL, XXL
Material 90% cotton, 10% elastane
01 black



TIGHTS KIDS

Art. 2003162
Size 116, 128, 140, 152, 164
Material 90% cotton, 10% elastane
01 black



01

one pocket with zip on the right side

mesh inserts with continuous reflective stripes on the sides

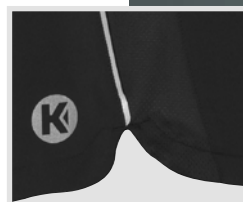
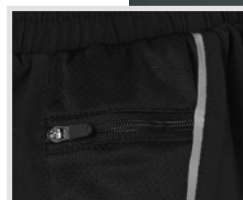
reflective Kempa and K-label prints on the front and back



tailored for women

light and very breathable shorts

short side slits



Also suited for Badminton and Tennis

back

side



NEW

ACTIVE SHORTS WOMEN



Art. 2003669

Size XS, S, M, L, XL, XXL

Material 92% polyester (recycled), 8% elastane

01 black



Adriana Marksteiner



big Kempa wording on back

Kempa wording on center front top

sock with reinforced sole and functional flex areas



back



02



04



05



06



08



22



23



28



LOGO CLASSIC SOCKS

Art. 2003541 (pair)

Size 31-35, 36-40, 41-45, 46-50

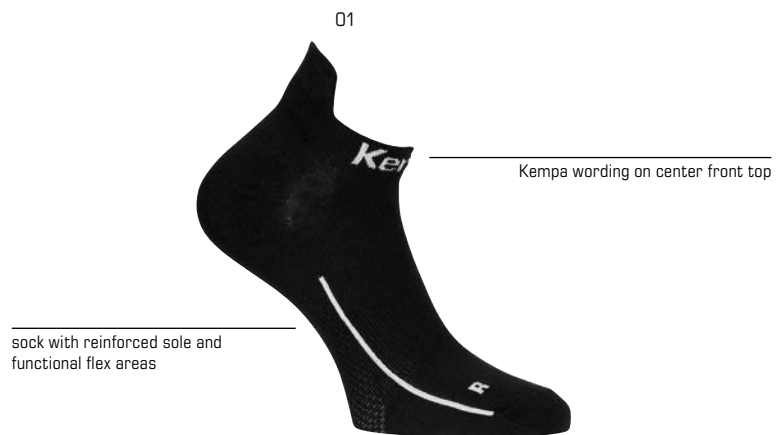
Material 80% cotton, 18% polyamide, 2% elastane

01 white/red, **02** white/black, **04** white/royal, **05** white/pink,

06 black/white, **08** kempablue/white, **22** royal/white,

23 red/white, **28** white/kempablue





LOW CUT SOCKS

Art. 2003548 (2 pairs)

Size 31-35, 36-40, 41-45, 46-50

Material 68% cotton, 30% polyamide, 2% elastane

01 black, **02** white



3 pairs

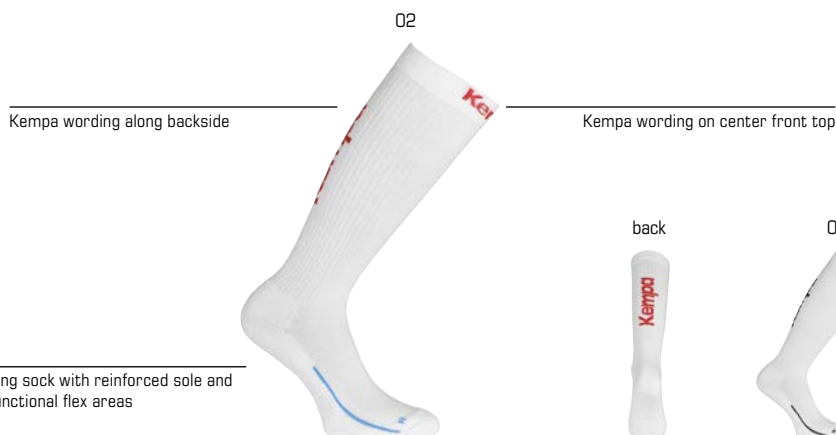
TEAM CLASSIC SOCKS

Art. 2003536 (3 pairs)

Size 31-35, 36-40, 41-45, 46-50

Material 80% cotton, 18% polyamide, 2% elastane

01 white/black, **02** black/white



LONG SOCKS

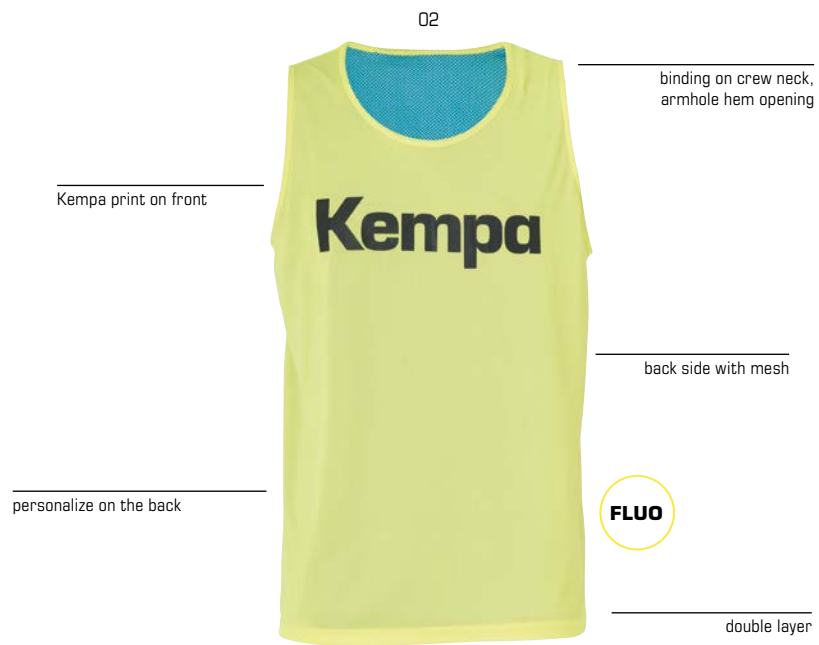
Art. 2003545 (pair)

Size 31-35, 36-40, 41-45, 46-50

Material 80% cotton, 18% polyamide, 2% elastane

01 white/black, **02** white/red, **06** black/white, **08** kempablue/white, **18** white/royal





REVERSIBLE TRAINING BIB

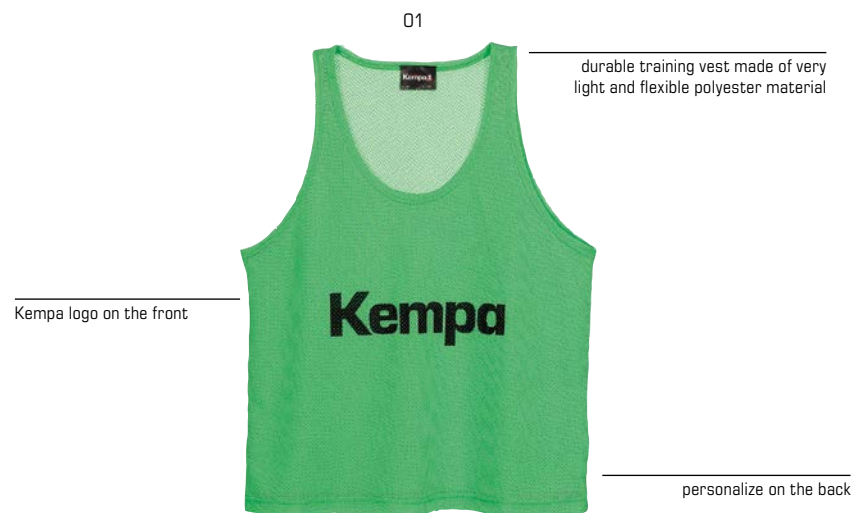
Art. 2003151

Size XS/S, M/L, XL/XXL

Material 100% polyester; 100% polyester open mesh

01 orange/green, **02** fluo yellow/kempablue

PERSONALIZE ON THE BACK



TRAINING BIB

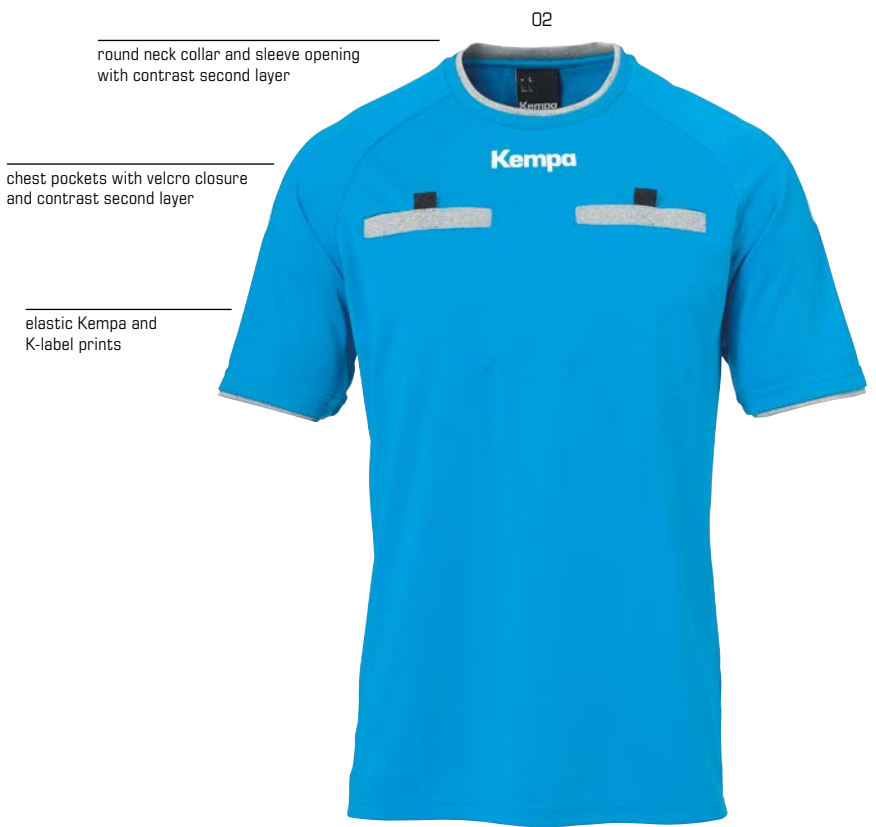
Art. 2003150

Size XS, S, M, XL

Material 100% polyester

01 green, **02** orange

PERSONALIZE ON THE BACK



02
round neck collar and sleeve opening with contrast second layer

chest pockets with velcro closure and contrast second layer

elastic Kempa and K-label prints



back

side



01

03

04



back pockets with velcro closure and contrast second layer

cords on waistband

side pockets with contrast second layer

without inside slip

elastic Kempa and K-label prints

leg opening with contrast second layer 01

REFEREE SHIRT

Art. 2003101

Size 164, S, M, L, XL, XXL, 3XL

Material 100% polyester

01 black, **02** kempablue, **03** dark grey mélange, **04** hope green



REFEREE SHORTS

Art. 2003102

Size 164, S, M, L, XL, XXL, 3XL

Material 100% polyester

01 black





BASELAYER & PROTECTORS



ATTITUDE PRO SHORTSLEEVE
Art. 2002097



ATTITUDE PRO SHORTS
Art. 2002098



ATTITUDE PRO WOMEN TOP
Art. 2002099



ATTITUDE PRO SHORTS WOMEN
Art. 2002087



ATTITUDE PRO SHORTSLEEVE WOMEN
Art. 2002059



ATTITUDE LONGSLEEVE
Art. 2002068



ATTITUDE TIGHTS
Art. 2002069



PROTECTION SHORTS
Art. 2002238



KGUARD KNEE SUPPORT
Art. 2006514



KGUARD ELBOW SUPPORT
Art. 2006515



ARM SLEEVE
Art. 2006513



KNEE SUPPORT PADDED
Art. 2006509



ELBOW SUPPORT PADDED
Art. 2006508



KNEE INDOOR SUPPORT PADDED
Art. 2006510





Luis Foegel



FLEX FIT



stretchy material adapts ideally to movement and thus increases performance

antibacterial treatment prevents from infections and unpleasant odor

MATERIAL PRO



+ highly elastic material
+ soft grip
+ extremely low weight

antibacterial treatment prevents from infections and unpleasant odor

tight fit without side seam

01



knitted Kempa wording and K-label

raglan sleeves with contrast seams

tight fit without side seam

FUNKTION PRO



+ various structure zones
+ optimal breathing
+ excellent thermal regulation



COMFORT PRO



+ supple fit
+ no side seams
+ flat connection seams

knitted Kempa wording and K-label

01



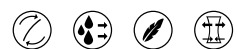
ATTITUDE PRO SHORTSLEEVE

Art. 2002097

Size XS/S, M/L, XL/XXL

Material 72% polyester, 21% polyamide, 7% elastane

01 black/kempablue, **02** kempablue/white



ATTITUDE PRO SHORTS

Art. 2002098

Size XS/S, M/L, XL/XXL

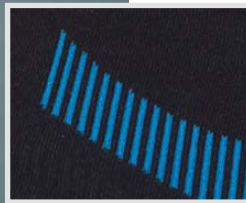
Material 72% polyester, 21% polyamide, 7% elastane

01 black/kempablue





Xenia Smits



FLEX FIT

stretchy material adapts ideally to movement and thus increases performance



MATERIAL PRO

- + highly elastic material
- + soft grip
- + extremely low weight



01



tight fit with double-layer without side seam

knitted Kempa wording and K-label

elastic rip

FUNKTION PRO

- + various structure zones
- + optimal breathing
- + excellent thermal regulation



knitted Kempa wording and K-label

tight fit tailored for women without side seam



COMFORT PRO

- + supple fit
- + no side seams
- + flat connection seams



01



ATTITUDE PRO WOMEN TOP

Art. 2002099
Size XS/S, M/L, XL/XXL
Material 72% polyester, 21% polyamide, 7% elastane
01 black/kempablue, **02** kempablue/white



ATTITUDE PRO SHORTS WOMEN

Art. 2002087
Size XS/S, M/L, XL/XXL
Material 72% polyester, 21% polyamide, 7% elastane
01 black/kempablue



ATTITUDE PRO SHORTSLEEVE WOMEN

Art. 2002059
Size XS/S, M/L, XL/XXL
Material 72% polyester, 21% polyamide, 7% elastane
01 black/kempablue, **02** kempablue/white

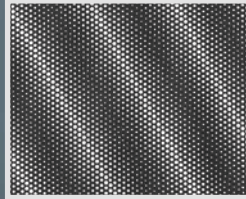




Adrien Dipanda



printed Kempa wording and K-label



in tone design on back



contrast knitted Kempa wording on rubber waistband

02



raglan sleeves with contrast seams

tight fit with dividing seam on front and flatlock seams



contrast flatlock seams

printed K-label

tight fit with flatlock seams

02



ATTITUDE LONGSLEEVE

Art. 2002068

Size 116, 128, 140, 152, 164
S, M, L, XL, XXL, 3XL

Material 88% polyester, 12% elastane

01 white, **02** black



ATTITUDE TIGHTS

Art. 2002069

Size 116, 128, 140, 152, 164
S, M, L, XL, XXL, 3XL

Material 88% polyester, 12% elastane

01 white, **02** black





Krešimir Kozina



elastic Kempa and K-label prints



back

side

01



elastic waistband with Kempa wording

padded underwear

padding on hip and leg

PROTECTION SHORTS

Art. 2002238

Size S, M, L, XL, XXL, 3XL

Material 85% polyester, 15% elastane

01 black



01



duo-density protection pad with excellent cushioning properties and an abrasion- and heat- resistant outer layer

optimal fitting and flexibility thanks to micro protection pad and embossed flex lines

protecting against minor impacts from falling

thermo-neopren sock with elastic 3D textile insert for perfect wearing comfort

side



KGUARD KNEE SUPPORT

Art. 2006514

Size XS/S, M/L, XL/XXL
Circumference XS/S: 32cm – 37cm
 M/L: 37cm – 41cm
 XL/XXL: 41cm – 46cm

Material 35% ethylene vinyl acetate, 25% neoprene, 20% nylon, 15% polyester, 5% elastane

01 black

01



duo-density protection pad with excellent cushioning properties and an abrasion- and heat- resistant outer layer

optimal fitting and flexibility thanks to micro protection pad and embossed flex lines

protecting against minor impacts from falling

thermo-neopren sock with elastic 3D textile insert for perfect wearing comfort

side



KGUARD ELBOW SUPPORT

Art. 2006515

Size XS/S, M/L, XL/XXL
Circumference XS/S: 22cm – 25cm
 M/L: 25cm – 28cm
 XL/XXL: 28cm – 31cm

Material 35% ethylene vinyl acetate, 25% neoprene, 20% nylon, 15% polyester, 5% elastane

01 black

01



protecting against minor impacts from falling

for all indoor sports

anatomical design with a non-slip fit and consistent compression

the padded Kempa knee support provides good impact protection and simultaneously high freedom of movement

secure grip and protection

KNEE SUPPORT PADDED

Art. 2006509

Size XXS, XS, S, M, L
Circumference XXS: 32cm – 34cm
 XS: 34cm – 36cm
 S: 36cm – 38cm
 M: 38cm – 40cm
 L: 40cm – 42cm

Material 65% nylon, 15% polyester,
 12% ethylene vinyl acetate, 8% elastane

01 black

01



the Indoor Knee Protector by Kempa is equipped with shock-absorbing foam in two different degrees of hardness, which offers excellent impact protection.

protecting against minor impacts from falling

anatomical design with a non-slip fit and consistent compression

secure grip and protection

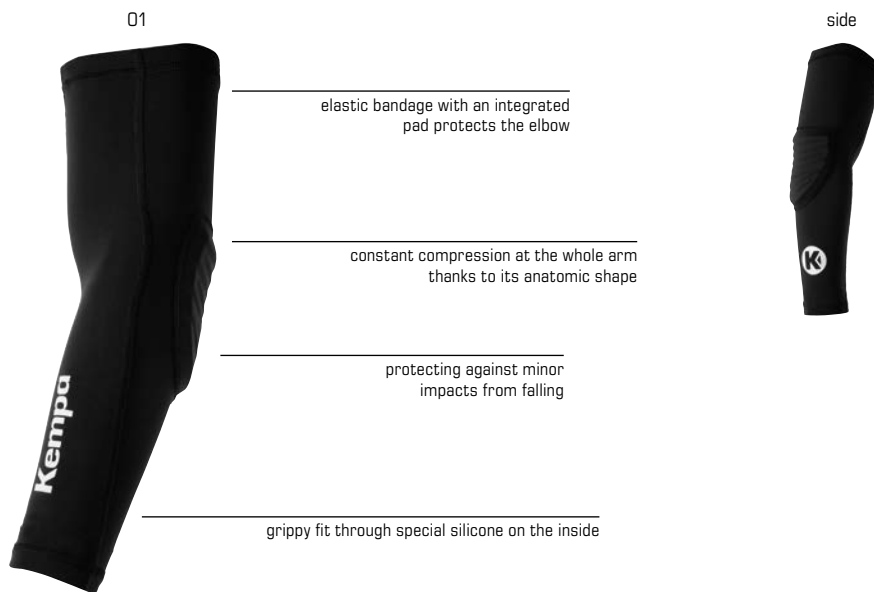
KNEE INDOOR SUPPORT PADDED

Art. 2006510

Size XS, S, M, L
Circumference XS: 32cm – 34cm
 S: 34cm – 36cm
 M: 36cm – 40cm
 L: 40cm – 43cm

Material 52% polyester, 40% polyurethane, 8% elastane

01 black



elastic bandage with an integrated pad protects the elbow

constant compression at the whole arm thanks to its anatomic shape

protecting against minor impacts from falling

grippy fit through special silicone on the inside

ARM SLEEVE

Art. 2006513

Size XS/S, M/L, XL/XXL
Circumference XS/S: 22cm – 26cm
 M/L: 26cm – 29cm
 XL/XXL: 29cm – 33cm

Material 75% nylon, 25% ethylene vinyl acetate

01 black/white



secure grip and protection

for all indoor sports

the padded Kempa elbow support provides good impact protection and simultaneously high freedom of movement

elastic bandage with shock-absorbing properties

anatomical design with a non-slip fit and consistent compression

ELBOW SUPPORT PADDED

Art. 2006508

Size XXS, XS, S, M, L
Circumference XXS: 20cm – 22cm
 XS: 22cm – 24cm
 S: 24cm – 27cm
 M: 27cm – 30cm
 L: 30cm – 34cm

Material 65% nylon, 15% polyester, 12% ethylene vinyl acetate, 8% elastane

01 black



RECYCLED POLYESTER

REFINEMENT IN YOUR COLOURS



SPORTS BAG
Art. 2004928



BACKPACK
Art. 2004919



BACKPACK TEAM
Art. 2004936



**K-LINE BAG PRO
BLACK&WHITE**
Art. 200488707



K-LINE BAG
Art. 2004887



TROLLEY
Art. 2004932



TEAM EQUIPMENT TROLLEY
Art. 2004845



PREMIUM TROLLEY
Art. 2004892



**PREMIUM
MESSENGER BAG**
Art. 2004893



BACKPACK PRO
Art. 2004935



PREMIUM BACKPACK
Art. 2004937



GEAR/BALLBAG
Art. 2004805



TOILETRY KIT
Art. 2004880



SHOEBAG
Art. 2004920



BALLBAG
Art. 2004804



MEDICAL BAG
Art. 2001871



01

Shoulder strap is detachable



adjustable, padded shoulder strap for high wearing comfort

U-shaped opening

additional zipped pocket on the front

two large side pockets

large free areas for refinement



S = 30 L



M = 50 L



L = 75 L



SPORTS BAG

Art. 2004928 S
2004929 M
2004930 L
2004931 XL

Size S: 48cm x 24,5cm x 24cm; 30L
M: 58cm x 27cm x 30cm; 50L
L: 68,5cm x 30cm x 35cm; 75L
XL: 73cm x 34cm x 34,5cm; 90L

Material 65% polyester, 35% recycled polyester
01 black

01

side pocket with zip



adjustable, padded shoulder strap for comfortable carrying

padded back

big main compartment

side pocket of mesh holds a water bottle

bottom compartment with zip



BACKPACK

Art. 2004919

Size 50cm x 40cm x 25cm; 50L

Material 81% polyester, 19% recycled polyester

01 anthra/black



01



separate zipped case

large main case

side



One pockets on the side made by mesh material for carrying a trink bottle



BACKPACK TEAM

Art. 2004936

Size 33,5cm x 15,5cm x 47,5cm; 24L

Material 98% recycled polyester, 2% polyurethane

01 black



07



side compartment with zip

carry handle on the side

padded, adjustable shoulder straps with velcro closure

seams in contrast colors

sport bag with backpack function

side pocket with zip

logo prints on the sides and the bottom

side



LIMITED EDITION

NEW

K-LINE BAG PRO BLACK & WHITE

Art. 2004887

Size 54cm x 28cm x 28cm; 60L

Material 53% polyester, 47% polyester (recycled)

07 black/white

03



side compartment with zip

carry handle on the side

padded, adjustable shoulder straps with velcro closure

seams in contrast colors

sport bag with backpack function

side pocket with zip

logo prints on the sides and the bottom

02



side



K-LINE BAG

Art. 2004887

Size 54cm x 28cm x 28cm; 40L

Material 79% recycled Polyester, 21% Polyester

02 black/white, **03** royal/white



XL = 120 L

01

Size XL: telescope made by high quality aluminium and handle made of nylon

U-shaped opening

side pocket with zipper

Large free areas for refinement

Size XL: large bottom case

Sports bag with trolley function



Size L & XL: additional large side pocket

Size XL: improved wheels for noise reduction



L = 90 L



TROLLEY

Art. 2004932 M
2004933 L
2004934 XL

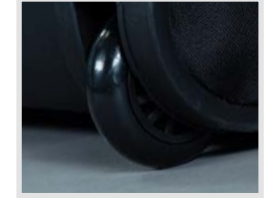
Size M: 59cm x 30cm x 32cm; 60L
L: 73,5cm x 36cm x 35cm; 90L
XL: 71,5cm x 39,5cm x 43cm; 120L

Material 55% polyester, 45% recycled polyester

01 black



M = 60 L



01

two-way zip on main compartment

additional front pocket with zip on main compartment

weight when empty 5.8kg

telescopic handle plus two additional pockets on top and on the side

functional trolley offers plenty of space for full team kit

printed Kempa logo on the front and side with zip for valuables or similar

additional fleece pockets



open



handle

TEAM EQUIPMENT TROLLEY

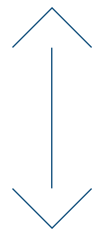
Art. 2004845

Size 72cm x 48cm x 42cm; 145L

Material 70% polyester, 30% polyethylene

01 black

145 LITER



Smart sleeve that can be slid over the handle
Kempa PREMIUM TROLLEYS



→ SIZE S SUITABLE AS BOARDING LUGGAGE

PREMIUM TROLLEY

Art. 2004892 PREMIUM TROLLEY S 35L
 2004891 PREMIUM TROLLEY L 80L
 2004890 PREMIUM TROLLEY XL 100L

Size S: 50cm x 20cm x 35cm; 35L
 L: 61cm x 32cm x 42cm; 80L
 XL: 76cm x 33cm x 41cm; 100L

Material 93,5% tarpaulin, 6,5% polyester

01 black



PREMIUM MESSENGER BAG

Art. 2004893

Size 37cm x 30cm x 13cm; 15L

Material 50,5% tarpaulin, 49,5% polyester

01 black

01



padded backside

ball net on the outside

additional zipped case

large main case

two pockets on the side made by mesh material

side view



BACKPACK PRO

Art. 2004935

Size 27,5cm x 15cm x 42,5cm; 17L

Material 62% recycled polyester, 38% polyester

01 black

01



modern design

robust upper material

adjustable, padded shoulder straps for highest wearing comfort

two pockets made by mesh material for carrying a trink bottle

side view



PREMIUM BACKPACK

Art. 2004937

Size 29cm x 17cm x 52,5cm; 25L

Material 56% polyester, 44% PVC

01 black



BAGS AND TROLLEYS



BAGS & TROLLEYS MADE FROM SUSTAINABLE MATERIALS

It is our duty to use **natural resources** wisely in order to leave the **smallest possible ecological footprint**.

At **Kempa** we develop our bags and trolley bags with sustainable materials **for our environment**.

Reduce YOUR footprint too.



01

carrying loop on top

big compartment with zip

SHOEBAG

Art. 2004920

Size 37 cm x 10 cm x 23 cm

Material 100% polyester

01 black

lateral mesh
insert for
high ventilation



01

ball bag with two shoulder
straps and mesh fabric for
carrying up to 10 balls

BALLBAG

Art. 2004804

Size 65 cm x 45 cm

Material 100% polyester

01 black



01

ball bag with cord for the transport of one ball

GEAR/BALLBAG

Art. 2004805

Size 35 cm x 34 cm

Material 100% polyester

01 black



01

handle grip

medical bag with main compartment and
two additional compartments inside

additional pockets outside for water bottles

MEDICAL BAG

Art. 2001871

Size 34 cm x 17 cm x 27 cm; 20 L

Material 100% polyester

01 black

prepared to hold all
medical equipment



01

handle grip

inside mesh bag

Kempa embroidery

hanger on the top

TOILETRY KIT

Art. 2004880

Size 28 cm x 20 cm x 28 cm

Material 100% polyester

01 black



02

handball resin for optimal grip

contains natural resin, herbal oils, essential oils



02

HANDBALLWAX

Art. 2001583 200 ml
2001584 500 ml

Size 200 ml
500 ml

02 without color



02

suitable for drinking water

DRINKING BOTTLE

Art. 2001209

Size 750 ml

02 transparent



02

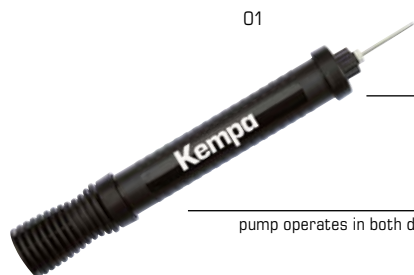
hard case bottle carrier for 12 bottles

BOTTLE CARRIER

Art. 2001210

Size 12 bottles

02 black



01

makes quick and easy ball inflation possible

pump operates in both directions

2-WAY-PUMP

Art. 2001800

01 black



P.U.: 10 pieces

NEEDLE VALVE

Art. 2001800010700

VPE 10 pieces



01

anatomically shaped bathing sandal

BATHING SANDAL

Art. 2008580

Size 36-49 (full sizes)

Material upper material: polyurethane, lining: textile, sole: ethylene vinyl acetate

01 kempablue/black

01



P.U.: 4 coloured hair bands:
black/white, black/fluo orange, red/white, kempablue/black

SPORTBANDS

Art. 2005048

Size 22 cm

Material 65% nylon, 23% rubber, 12% polyester

01 diverse color

01



two layer beanie with
Kempa woven label

BEANIE

Art. 2005107

Size one size

Material black: 92% polyester, 8% elastane
light grey mélange 70% cotton, 30% elastane

01 light grey mélange/black

02



snap on center back

CORE 2.0 silicon print on front
and Kempa woven label on back

FLATCAP

Art. 2005106

Size one size

Material 100% cotton

02 light grey mélange

contrast decoration
on shield

02



asymetric shape

WOOL BEANIE

Art. 2003402

Size one size

Material 100% polyacryl

02 black

Kempa-Cl-Label

01



towel with big Kempa Logo

TOWEL

Art. 2005810

Size 72 cm x 140 cm

Material 100% cotton

01 white/black

01



short wrist bands
with Kempa wording

02



03



04



WRISTBAND SHORT 6 PACK

Art. 2005812 (6 pair)

Length 9cm

Material 75% cotton, 25% nylon

01 black, **02** red, **03** white, **04** kempablue

01



long wrist bands with
Kempa wording

02



WRISTBAND LONG 6 PACK

Art. 2005811 (6 pair)

Length 12cm

Material 75% cotton, 25% nylon

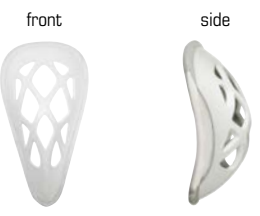
01 white, **02** black

01



lightweight and dura-flexible protection cup

size of cup is identical for M and L



the duo-density weight-reduced construction of the cup provides advanced flexibility, breathability and protection at the same time. The rubberised edges of the cup grant advanced wearing comfort and mobility. Durable elasticated waistband and leg straps provide a comfortable fit. Removable protection cup for washing.

SUSPENSORIUM

Art. 2006631

Size S (waist 66 – 81cm)
M (waist 81 – 96cm)
L (waist 96 – 111cm)

Material polypropylene 43%, polyester 20%, thermo plastic rubber 15%, elastane 12%, nylon 10%

01 black

GIVE AWAYS GIVE AWAYS GIVE AWAYS GIVE AWAYS GIVE AWAYS GIVE AWAYS GIVE AWAYS GIVE AWAYS GIVE AWAYS GIVE AWAYS

07



with softbag

SUNGLASSES

Art. 2099000

Size one size

Material Polycarbonate

UV400 Protection

15



CUP

Art. 209900015 Cup

Size 200 ml

Material ceramic

43



CUP

Art. 209900043 Cup Love

Size 200 ml

Material ceramic

34



loose points

DIN A5, 80 sheets

NOTEBOOK A5

Art. 2099000

Size DIN A5

Material envelope: hardcover
content: 80 gr/m²

51



320 x 120 x 410 mm

VPE 25 pcs

PAPER BAG

Art. 2099000

VPE 25 pcs

Material FSC craft paper 100 g/m²

MORE GIVE AWAYS

under: kempa.eu/giveaways2023



01

incl. carrying system



40 pieces: 10 x fluo yellow,
10 x cyan,
10 x fluo orange,
10 x black

high quality marking caps

very resilient and versatile usable

MARKER CONES

Art. 200121501

Size Ø 19 cm, height: 5 cm

Colour fluo yellow, cyan, fluo orange, black

01

very thin



24 pieces: 12 x fluo yellow,
12 x fluo orange

anti-slip marking discs

low risk of injury due to rubberised
structural material

incl. carrying system

MARKING DISCS

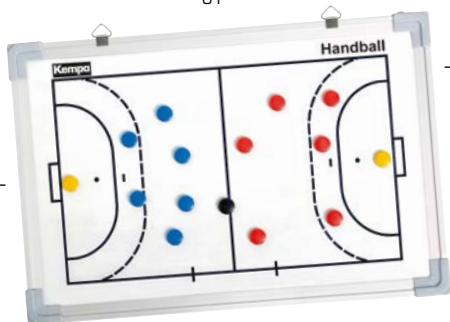
Art. 200121601

Size Ø 15 cm

Colour fluo gelb, fluo orange

01

Handball tactic board



brackets for the wall

incl. magnets, boardmarker and
wipe-sponge



back



TACTIC BOARD

Art. 200122901

Size 60 x 30 cm

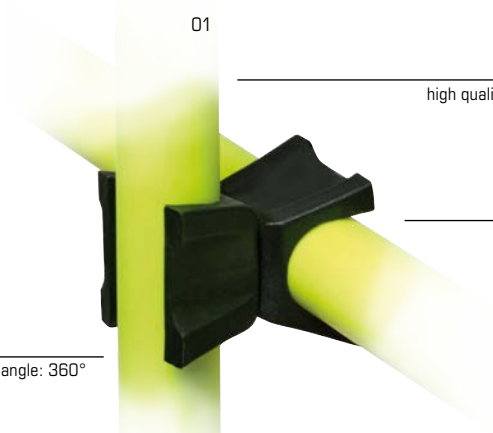
Colour white with black lines

01

high quality hurdle clips

suitable for jumping and coordination poles

rotation angle: 360°

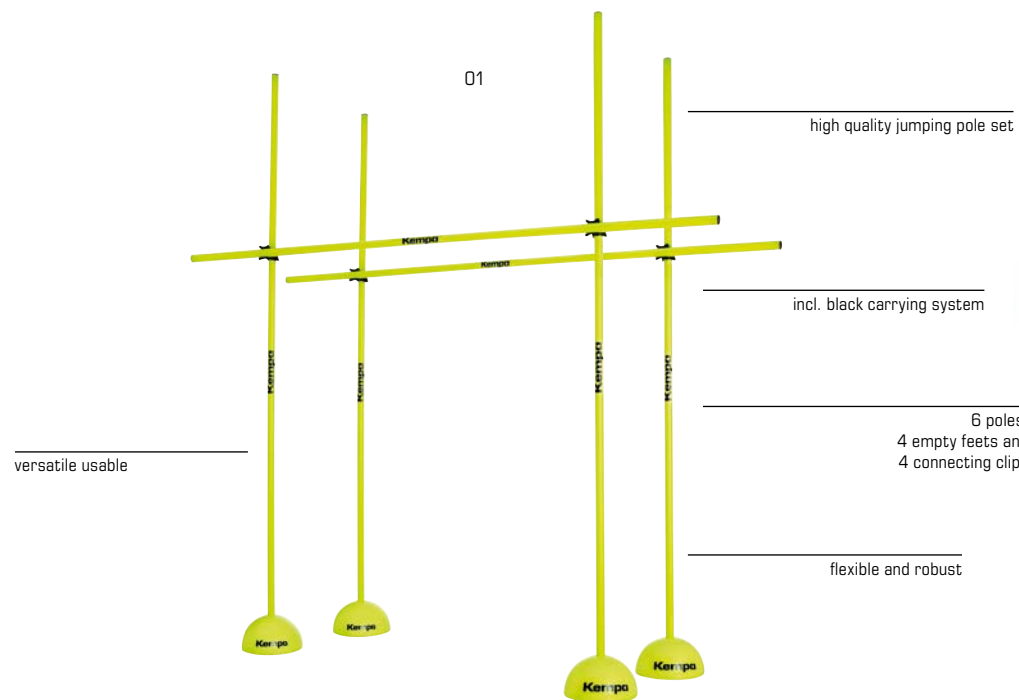


CLIP

Art. 200122101

Size one size

Colour black

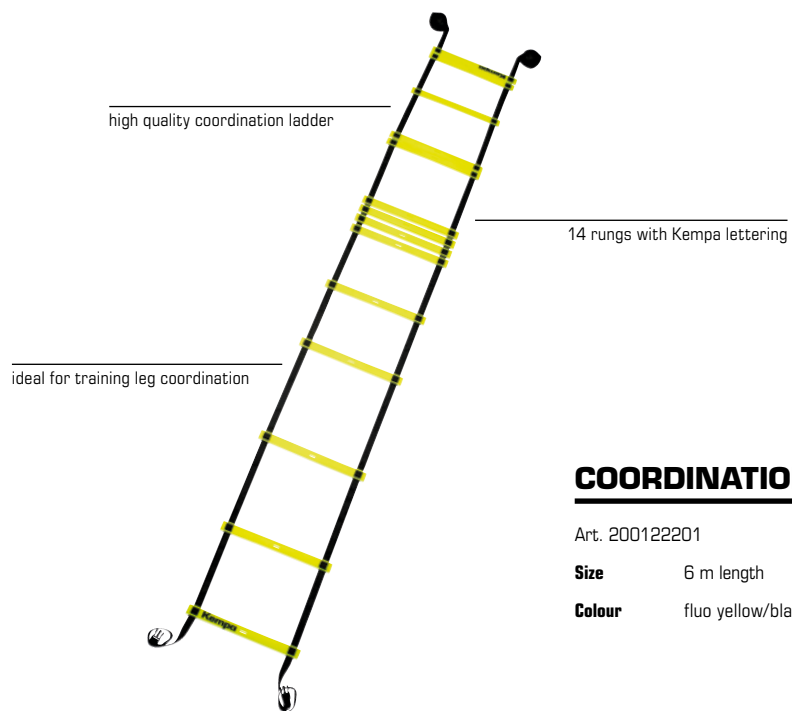


JUMPING POLE SET

Art. 200122001

Height ca. 175 cm

Colour fluo yellow with Kempa wording



COORDINATION LADDER

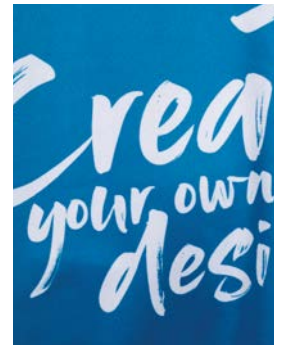
Art. 200122201

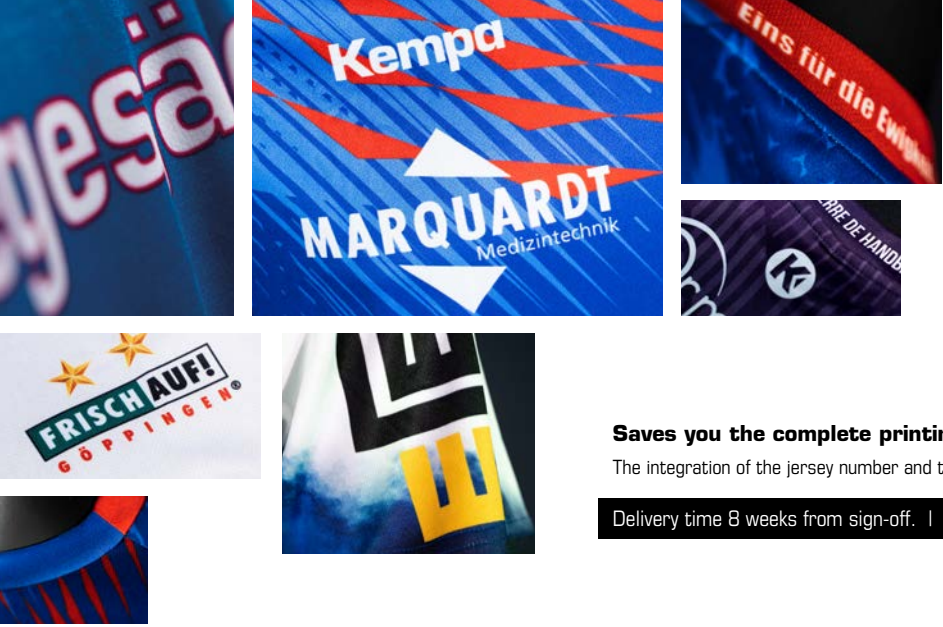
Size 6 m length

Colour fluo yellow/black

Creator

Your own **Design!**





Create your own design

Saves you the complete printing costs!
The integration of the jersey number and the club and player name is free of charge.
Delivery time 8 weeks from sign-off. | Minimum order quantity of 10 pieces/article

Choose your favourite product or a completely individual design



Create your individual colours for each cutting element



Customize your design with name, number and logo



creator.uhlsportcompany.com/kempa

Questions?

Your Kempa specialist dealer will be happy to help you!

BALL Creator

Logo, number and name on the ball!



Ask your
Kempa
dealer

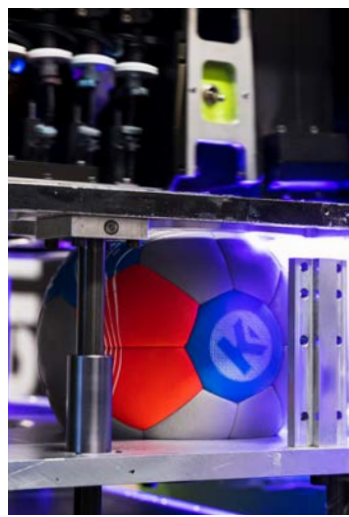
INDIVIDUALIZE YOUR BALL WITH NUMBER, NAME OR LOGO

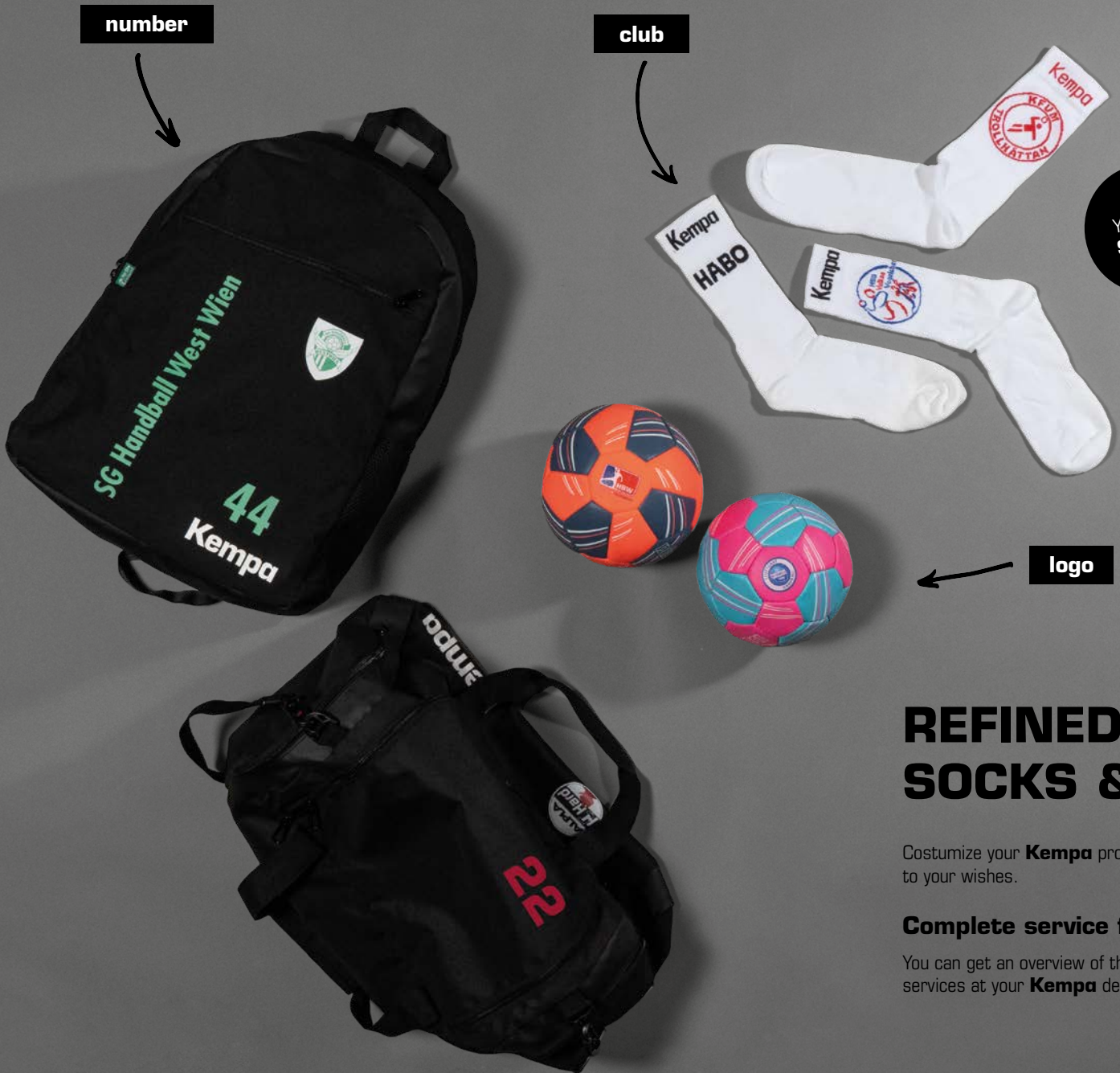
CI-faithful, multi-colored logos,
club names, numbers, club logos.

The logo is printed directly onto the ball surface with
an industrial uv inkjet printer.

Your advantage: sharp and true tone prints, which are
durable even after prolonged use and achieve their
effect.

Delivery time 10 days from sign-off.





number

club

logo

Your own Socks*

THAT'S NOT ALL!

Customize matching socks to your shirt.

Minimum order quantity of 100 pairs of socks/design
Delivery time 4 weeks from sign-off.

REFINED BAGS, SOCKS & BALLS!

Customize your **Kempa** products directly with us according to your wishes.

Complete service from a single source.

You can get an overview of the complete **Kempa** finishing services at your **Kempa** dealer.

Index

Art.	Name	Page	Art.	Name	Page	Art.	Name	Page	Art.	Name	Page
2001209	DRINKING BOTTLE	177	2002346	POLY SHIRT	114	2003623	PLAYER SHORTS WOMEN	25	2003663	CORE 26 HOOD JACKET	81
2001210	BOTTLE CARRIER	177	2002347	POLO SHIRT WOMEN	121	2003624	PLAYER HOOD JACKET	27	2003664	CORE HOOD JACKET WOMEN	83
2001583	HANDBALLWAX 200ML	176	2002348	POLY POLO SHIRT	120	2003626	LITE TRAINING PANTS	15, 27	2003665	CORE 26 PANTS	81
2001584	HANDBALLWAX 500ML	176	2002349	CLASSIC POLO SHIRT	119	2003626	LITE TRAINING PANTS	137	2003666	CORE 26 PANTS WOMEN	83
2001800	2-WAY-PUMP	177	2002350	POLY SHIRT WOMEN	115	2003627	PLAYER HOOD JACKET WOMEN	29	2003667	CORE 26 SWEATSHORTS	77
2001871	MEDICAL BAG	176	2003029	GRAPHIC HOODY	125	2003628	LITE TRAINING PANTS WOMEN	17, 29	2003669	ACTIVE SHORTS WOMEN	151
2001890	SYNERGY SPECTRUM PRIMO	110	2003037	EMOTION 2.0 PANTS	47, 51, 61, 65, 67	2003628	LITE TRAINING PANTS WOMEN	137	2003670	HOODY	124
2001892	LEO BLACK & WHITE	111	2003038	EMOTION 2.0 PANTS WOMEN	49, 63	2003629	PLAYER TRAINING TOP	31	2003671	MODERN PANTS	123
2001895	SOFT GRIP BLACK & WHITE	111	2003099	SKORT	148	2003630	HOOD JACKET BACK2COLOUR	100	2003672	SOFTSHELL JACKET	130
2002059	ATTITUDE PRO SHORTSLEEVE WOMEN	161	2003100	SKORT GIRLS	148	2003631	T-SHIRT BACK2COLOUR	98	2003673	SOFTSHELL JACKET WOMEN	131
2002068	ATTITUDE LONGSLEEVE	163	2003101	REFEREE SHIRT	155	2003633	STATUS HOOD JACKET	86	2003674	PUFFER HOOD JACKET	133
2002069	ATTITUDE TIGHTS	163	2003102	REFEREE SHORTS	155	2003634	STATUS HOOD JACKET WOMEN	87	2003675	RAIN JACKET	129
2002087	ATTITUDE PRO SHORTS WOMEN	161	2003108	POCKET SHORTS	147	2003635	STATUS PANTS	89	2003676	COLLEGE JACKET	132
2002091	TEAM T-SHIRT	94, 117	2003121	PRIME SHIRT	43	2003636	STATUS PANTS WOMEN	89	2003677	ACTIVE JACKET	128
2002092	PROMO T-SHIRT	116	2003122	PRIME SHIRT WOMEN	45	2003637	STATUS POLO SHIRT	90	2003678	T-SHIRT BLACK & WHITE	106
2002097	ATTITUDE PRO SHORTSLEEVE	159	2003123	PRIME SHORTS	43	2003638	STATUS T-SHIRT	92	2003679	T-SHIRT SHIRT WOMEN BLACK & WHITE	107
2002098	ATTITUDE PRO SHORTS	159	2003124	PRIME SHORTS WOMEN	45	2003639	STATUS T-SHIRT WOMEN	93	2003680	HOOD SHIRT BLACK & WHITE	108
2002099	ATTITUDE PRO WOMEN TOP	161	2003150	TRAINING BIB	154	2003640	STATUS SHORTS	91	2003681	HOOD SHIRT WOMEN BLACK & WHITE	109
2002149	EMOTION 2.0 TRAINING TOP	71	2003151	REVERSIBLE TRAINING BIB	154	2003641	TRAINING TOP	88, 123	2003682	TRAINING TOP WOMEN BACK-2COLOUR	101
2002159	PRIME POLO SHIRT	118	2003160	CLASSIC SHORTS	144	2003642	PERFORMANCE TIGHTS WOMEN	149	2003683	T-SHIRT WOMEN BACK2COLOUR	99
2002236	TRAINING TIGHTS	142, 143	2003161	TIGHTS WOMEN	150	2003644	PLAYER SHOOTING SHIRT	39	2003684	TIGHTS WOMEN BACK2COLOUR	102
2002237	TRAINING TIGHTS WOMEN	143	2003162	TIGHTS KIDS	150	2003645	PLAYER TANK TOP	33	2003685	SOCKEN BACK2COLOUR	103
2002238	PROTECTION SHORTS	164	2003163	EMOTION 2.0 SHIRT	57	2003646	PLAYER TANK TOP WOMEN	35	2004804	BALLBAG	176
2002256	EMOTION 2.0 HOOD JACKET	61	2003164	EMOTION 2.0 SHIRT WOMEN	59	2003647	PLAYER LONG SHORTS	33	2004805	GEAR/BALLBAG	176
2002257	EMOTION 2.0 HOOD JACKET WOMEN	63	2003165	EMOTION 2.0 SHORTS	57	2003648	PLAYER LONG SHORTS WOMEN	35	2004845	TEAM EQUIPMENT TROLLEY	172
2002258	EMOTION 2.0 POLY JACKET	65	2003166	EMOTION 2.0 SHORTS WOMEN	59	2003651	REVERSIBLE TANK TOP	37	2004880	TOILETRY KIT	176
2002267	EMOTION 2.0 QUARTER ZIP HOODY	67	2003184	EMOTION 2.0 POLY SHIRT	73	2003652	REVERSIBLE SHORTS	37	2004887	K-LINE BAG PRO BLACK & WHITE	110, 171
2002268	EMOTION 2.0 LONGSLEEVE	69	2003205	WEBSHORTS	146	2003653	WINTER JACKET	134	2004887	K-LINE BAG	171
2002283	GRAPHIC T-SHIRT	126	2003210	CLASSIC SHORTS WOMEN	145	2003654	WAVE 26 SHIRT	11	2004892	PREMIUM TROLLEY	173
2002284	GRAPHIC T-SHIRT GIRLS	127	2003402	WOOL BEANIE	178	2003655	WAVE 26 SHIRT WOMEN	13	2004893	PREMIUM MESSENGER BAG	173
2002285	GRAPHIC T-SHIRT WOMEN	127	2003536	TEAM CLASSIC SOCKS	153	2003656	WAVE 26 SHORTS	11	2004919	BACKPACK	170
2002293	PRIME LONGSLEEVE	53	2003541	LOGO CLASSIC SOCKS	152	2003657	WAVE 26 SHORTS WOMEN	13	2004920	SHOEBAG	176
2002327	PRIME POLY JACKET	51	2003545	LONG SOCKS	153	2003658	WAVE 26 POLY JACKET	15	2004928	SPORTS BAG	170
			2003548	LOW CUT SOCKS	153	2003659	WAVE 26 POLY JACKET WOMEN	17	2004932	TROLLEY	172
			2003620	PLAYER SHIRT	23	2003660	WAVE 26 LONGSLEEVE	19	2004935	BACKPACK PRO	174
			2003621	PLAYER SHIRT WOMEN	25	2003661	CORE 26 T-SHIRT	77	2004936	BACKPACK TEAM	171
			2003622	PLAYER SHORTS	23	2003662	CORE 26 T-SHIRT WOMEN	79			

Art.	Name	Page
2004937	PREMIUM BACKPACK	174
2005039	PRESENTATION PANTS WOMEN	141
2005048	SPORTBANDS	177
2005049	PRESENTATION PANTS	141
2005069	CLASSIC PANTS	136
2005072	CLASSIC PANTS WOMEN	136
2005075	PERFORMANCE PANTS	138
2005076	PERFORMANCE PANTS WOMEN	138
2005106	FLATCAP	178
2005107	BEANIE	178
2005118	PRIME MULTI JACKET	47
2005119	PRIME MULTI JACKET WOMEN	49
2005810	TOWEL	178
2005811	WRISTBAND LONG 6 PACK	178
2005812	WRISTBAND SHORT 6 PACK	178
2005884	SWEAT PANTS	139
2005890	GOALKEEPER PANTS	140
2006508	ELBOW SUPPORT PADDED	167
2006509	KNEE SUPPORT PADDED	166
2006510	KNEE INDOOR SUPPORT PADDED	166
2006513	ARM SLEEVE	167
2006514	KGUARD KNEE SUPPORT	165
2006515	K GUARD ELBOW SUPPORT	165
2006631	SUSPENSORIUM	179
2008570	K-FLOAT	89
2008580	BATHING SANDAL	177
2099000	SUNGLASSES	179
2099000	NOTEBOOK A5	179
2099000	PAPER BAG	179
200121501	MARKER CONES	180
200121601	MARKING DISCS	180
200122001	JUMPING POLE SET	181
200122101	CLIP	180
200122201	COORDINATION LADDER	181
200122901	TACTIC BOARD	180
209900015	CUP	179
209900043	CUP LOVE	179
2001800010700	NEEDLE VALVE	177

Textil Size Table ↗

INTERNATIONAL	KIDS					MEN						
	116	128	140	152	164	S	M	L	XL	XXL	3XL	X3XL
Germany						44/46	48/50	52/54	56	58	60	62/64
chest	61-64	65-69	70-75	76-81	82-86	86-92	93-100	101-106	107-112	113-118	119-122	123-132
waist	54-58	59-60	61-65	66-71	72-74	74-80	81-89	90-96	97-102	103-107	108-111	112-128
hips	60-64	65-70	71-77	78-85	86-90	93-98	99-104	105-108	109-111	112-114	115-117	118-129

INTERNATIONAL	XS	S	M	L	XL	XXL
Germany	34	36/38	40/42	44/46	48/50	52/54
chest	77-83	83-89	89-94	94-101	101-110	110-120
waist	60-66	66-71	72-77	77-85	85-94	94-104
hips	86-93	93-98	98-104	104-111	111-119	119-128

Textil Icons

WAVE 26 SHIRT

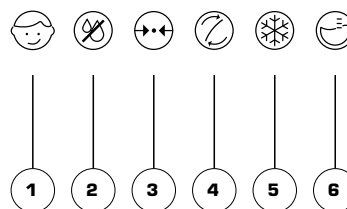


Art. 2003654

Size 116, 128, 140, 152, 164
S, M, L, XL, XXL, 3XL

Material 100% polyester (recycled)

01 black/antra, **02** white/grey, **03** kempablu/royal,
04 red/chili red, **05** dark grey mélange/antra,
06 hope green/lagoon, **08** royal/navy



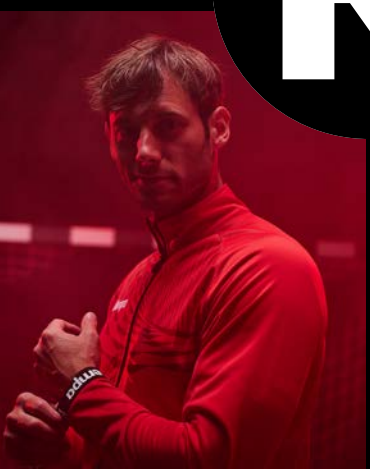
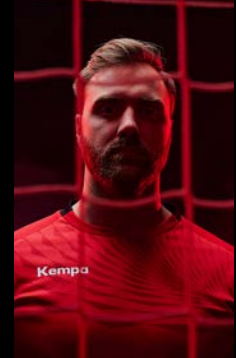
- 1** Kids size available.
- 2** **DRY TECH** Moisture repellent material transports sweat outwards and helps to keep you feeling dry.
- 3** **COMFORT FIT** Tailored forms increase freedom of movement and improve comfort.
- 4** **FLEX FIT** Stretchy material adapts ideally to movement and thus increases performance.
- 5** **COOL TECH** Active breathing weave improves air circulation and helps maintain comfortable body temperatures.
- 6** **THERMO TECH** Wind proof, water repellent and breathable materials provide a comfortable body temperature.



Parts of the products are made from sustainable materials.



2023



TEAMWEAR

